



VisitCape.com

800-777-0068 or 573-335-1631

Info@VisitCape.com

220 N. Fountain Street, Cape Girardeau, MO 63701

Open Monday - Thursday 8 a.m. to 5 p.m.

and Friday 8 a.m. to 4 p.m.

Cape Girardeau

MISSOURI



MISSOURI



enjoy the show

Cape Girardeau, Missouri
VISITORS GUIDE



WELCOME TO Cape Girardeau MISSOURI

Nestled along the western banks of the mighty Mississippi River, you'll find Cape Girardeau, Missouri – a community rich in history and heritage. For more than 250 years, people have been drawn to Cape Girardeau and the river on which it lies. As you stroll along our riverfront, pause for a moment... You'll feel the passion that led Mark Twain to write so eloquently about Cape Girardeau in *Life on the Mississippi*, the inspiration that Gen. Ulysses S. Grant used to lead with firm conviction as he took command of the Union Army on the Mississippi in our historic downtown and the warmth and hospitality that our community founder Louis Lorimier extended to Lewis and Clark while on the journey of a lifetime as they set forth on their Corps of Discovery to explore the Louisiana Purchase.

Whether hiking through a state park, enjoying a theater production, walking across a covered bridge, shopping for antiques, visiting area wineries, viewing murals that stretch the entire length of the downtown area, making memories at one of our family-friendly attractions or stepping back in time at any number of historic sites... If your expectation is a wonderful getaway, your adventure starts in Cape Girardeau!

We'll See You Soon!

Whether your travels bring you to Cape Girardeau for an unforgettable vacation, as a spectator or participant in one of our many outstanding sporting events, as part of a group tour or as an attendee at a regional conference, we hope you'll stop by our Convention & Visitors Bureau. We would love to have the opportunity to say hello and personally welcome you to Cape Girardeau.

While you're here, we can provide you with some great suggestions regarding lodging, dining, shopping, entertainment, self-guided tours and we'll even throw in a story or two! With a wide variety of attractions, activities and events, you'll create not only some wonderful memories, but hopefully along the way, you'll find your own stories to tell. Inspiration, warmth and hospitality still exist in a place that is uniquely Cape Girardeau, Missouri. We hope to see you soon!

3 **Settling On The Banks Of The River**

4-7 **Back In Time**

Bollinger Mill State Historic Site
Cape River Heritage Museum
Old Lorimier Cemetery
Glenn House
Crisp Museum
Red House Interpretive Center
Old St. Vincent's Church
Fort D
Common Pleas Courthouse

8-11 **Family Fun**

Cape Splash Family Aquatic Center
Discovery Playhouse
Children's Museum
Melaina's Magical Playland
Lazy L Safari Park
Cape Girardeau Public Library
Levi's Adventure Trail
Conservation Nature Center
Safari Playland
Ultimate Air Trampoline Park
Sports Action

12-15 **Great Outdoors**

Trail of Tears State Park
Old Mississippi River Bridge
Scenic Overlook
Cape Rock Scenic Overlook
Capaha Rose Garden
Trails
City Parks
Golf

16-19 **Picture This**

Murals
City-Wide Weekend of Arts and Crafts Fairs
First Friday with the Arts Gallery Stroll
Art Galleries and Studios
Calendar of Events

20-21 **Shopping**

22-23 **Uniquely Cape**

Cape Riverfront Market
Cape Farmer's Market
Freedom Corner
Rush Limbaugh Hometown Driving Tour
Cape Girardeau Souvenirs
Gone Girl Driving Tour
African American Driving Tour

24-27 **Come Play**

Live Entertainment
River Campus of Southeast Missouri State University
Tunes at Twilight
Show Me Center
Century Casino
Day Spas
Wineries and Microbreweries
Dining

28-29 **Stay**

Bed and Breakfast
Vacation Rentals
Campgrounds and Cabins
Hotels and Motels

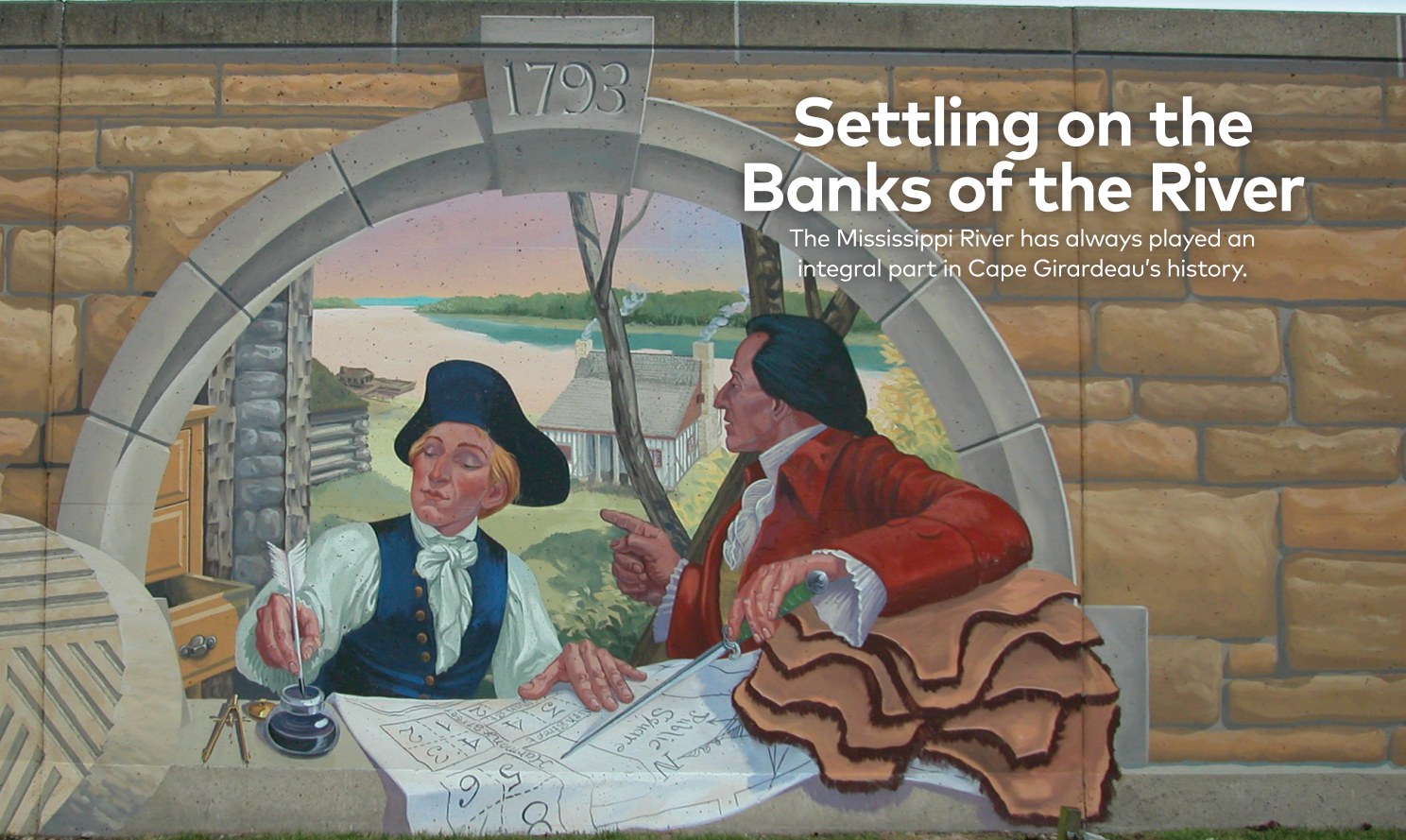
30-31 **City Map**

Due to changes in area services, the Cape Girardeau Convention & Visitors Bureau is not responsible for incorrect information contained herein or information omitted. Materials are based on responses and surveys from the organizations and sponsors of events listed.



Settling on the Banks of the River

The Mississippi River has always played an integral part in Cape Girardeau's history.



Long before Europeans settled here, this area was home to many tribes of Native Americans, including the Ozark Bluff Dwellers and the Mississippian Tribe. The lush grasses, mild-to-moderate climate and easy river accessibility provided the perfect place to live.

In the 1730s, a young Frenchman named Jean Baptiste Girardot, for whom the city is named, established a trading post at a significant headland jutting well into the river. This large outcrop became known as The Cape. However, Girardot was a trader, not a settler, and by the mid-1700s Girardot had moved on.

In 1793, the Spanish government gave Frenchman Louis Lorimier a sizable land grant, which included title to land throughout this entire region. He established a trading post near the river, just a few miles south of the site previously established by Girardot. Even though Lorimier is considered to be the community's true founder, he was not afforded the honor of being its namesake. Lorimier did try, by naming his post Lorimont, but the names The Cape and Girardot were already widely associated with the area and so the community ultimately became known as Cape Girardeau. Lorimier's trading post and home, The Red House, was located near

the site now occupied by Old St. Vincent's Church. The house stood until 1850, when it was destroyed by a tornado.

As Lewis and Clark set out on their expedition in 1803, they arrived in a thriving community boasting a population of 1,111. Early in 1806, the town of Cape Girardeau was laid out in lots and a petition for incorporation was presented in 1808. With the advent of steamboats came easy movement of manufactured goods which expedited growth. Shops were opened and hotels went up along the river. Cape Girardeau moved from being a village to a city. As railroads were completed, the city's population doubled in just a few months.

Ironically, the river that had been so intricately tied to the establishment of the community also devastated the city through flooding. Every few years, the Mississippi River would ravage the downtown area, wiping out businesses and bankrupting the proprietors. In order for the city to survive, something had to be done to tame the river. Plans took decades, but in 1956 work began on a floodwall that would protect the city's historic downtown. It was completed in 1964 at a cost of \$4 million and has saved the downtown area many times over.

Back in Time

Discover more than 250 years of history and heritage in Cape Girardeau!

Bollinger Mill State Historic Site

- 1 Relive the days of yesteryear with a visit to Bollinger Mill State Historic Site, just 19 miles west of Cape Girardeau. The 19th-century mill and its neighboring covered bridge offer a glimpse of now rare Americana that once might have been expected around many a turn on Missouri roads. The present mill, dating to the Civil War period, is a massive four-story stone and brick building where corn was ground into meal long ago. The succession of three mills that have stood on this site represent more than 200 years of milling history.

The Burfordville Covered Bridge, standing alongside the mill, stretches 140 feet across the Whitewater River, which powered the mill. Both are listed on the National Register of Historic Places. Built in 1858, it is the oldest of only four remaining covered bridges in Missouri. The site is a perfect spot for a picnic under shade trees along the banks of the river.

Popular yearly events include Halloween storytelling, bluegrass concerts, guided walks to the Bollinger Family Cemetery and historic games.

MOSStateParks.com/Park/Bollinger-Mill-State-Historic-Site
113 Bollinger Mill Rd., Burfordville (Area D1 on map) 573-243-4591

Cape River Heritage Museum

- 2 The Cape River Heritage Museum is located in a local landmark, the old police and fire station, which dates back to 1908. Audio/video, dioramas, interactive and personal presentations enhance one's experience. Regional history exhibits are ever changing. The museum is a delightful way to familiarize all ages with what life was once like along the banks of the mighty Mississippi River. The Cape River Heritage Museum showcases Cape Girardeau's history from Ensign Girardot's trading post to the steamboat days to today.

VisitCape.com/Discover-Category/Back-in-Time
538 Independence St. (See map inset) 573-334-0405

Glenn House

- 4** The Glenn House provides a window into what life was like during the Victorian period. This home was built in 1883 in a vernacular farmhouse style for Lula Deane, the daughter of renowned architect and builder Edwin Branch Deane and the wife of David A. Glenn, one of the most influential citizens in Cape Girardeau's storied history. During the 1890s, electricity and plumbing were installed and, in 1900, an extensive renovation was undertaken to convert the style of the house to the then popular Queen Anne style. The home exemplifies the way a successful middle-class family would have lived at the turn of the 20th century. History recounts that Glenn was indeed a successful man whose influence did as much, if not more, than anyone else's to enhance the development of the city of Cape Girardeau. Listed on the National Register of Historic Places, this home has many of its original architectural features as well as original plumbing fixtures, moldings and wall treatments. This home has been faithfully restored with authentic period furniture gracing its interior. A new servants' room restoration brings to life the Voices from the Backstairs, where life as a servant during the late 1800s and early 1900s is illustrated. Dozens of beautifully decorated Christmas trees fill the Glenn House with Victorian holiday spirit on weekends through December during the annual Christmas at the Glenn House tours.

GlennHouse.org • 325 South Spanish St. (See map inset) 573-335-1631

Crisp Museum

- 5** The Rosemary Berkel and Harry L. Crisp II Southeast Missouri Regional Museum is located in the Cultural Arts Center at Southeast Missouri State University's River Campus. Southeast Missouri is a geological, cultural and transportation crossroads. Archaeologically, the Museum has several collections of Native American artifacts, including many Mississippian ceramics from the Beckwith Collection, which are on permanent display. The Beckwith Collection contains one of the largest collections of Native American artifacts in North America.

In the Crossroads Theatre, visitors can view a 17-minute video, which introduces the region's rich natural and human history. In the Crossroads Gallery, exhibits and kiosks highlight the history of southeast Missouri. Exhibitions in the museum's 1,900-square-foot art gallery feature works by local, regional, national and international artists. The museum also offers a number of special activities, including educational classes, family fun days, a summer academy and much more.

**SEMO.edu/Museum
518 South Fountain St.
(See map inset) 573-651-2260**

Old Lorimier Cemetery

- 3** Old Lorimier Cemetery was set aside by Louis Lorimier, the founder of Cape Girardeau, as the community's first graveyard. This historic cemetery features 1,446 marked burials as well as an undetermined number of unmarked graves. The total number of graves is estimated to be 6,500, including more than 1,200 Civil War soldiers. Grave markers represent a wide variety of styles and contain a great deal of historic funerary iconography.

**500 North Fountain St. (Area L8 on map)
573-334-1917**

Back In Time

Red House Interpretive Center

6 The Red House Interpretive Center commemorates the life of Cape Girardeau's founder Louis Lorimier as well as Lewis and Clark's visit to the community on November 23, 1803. The center houses a number of exhibits and interpretive panels highlighting Lewis and Clark's visit, French Colonial architecture, settlers of the Old Cape Girardeau District and river, roads and transportation of the day. The center is a re-creation of Lorimier's trading post and home and displays authentic items that would have been sold at the turn of the 19th century.

Historically-accurate gardens surround the house and the Sunrise Over a New Land Mural depicts what the Mississippi River looked like during Lorimier's lifetime.

**VisitCape.com/Discover/Red-House-Interpretive-Center/
128 South Main St.
(See map inset)
573-335-1631**



Old St. Vincent's Church

7 Built in the 1850s, this Chapel of Ease stands above the rest in that very few churches of this style exist in the U.S. Listed on the National Register of Historic Places, this church includes architectural features that are predominantly Gothic with some Roman influence.

One hundred medieval design plaster masks portraying characters from the Miracle and Mystery plays, distinctive wrought-iron designs, meticulously hand-carved 3¼-inch thick doors and exquisite Italian Renaissance architecture all contribute to the breathtaking atmosphere you'll find inside and out at Old St. Vincent's Church. Old St. Vincent's still hosts a number of religious and cultural events throughout the year as well as weekly mass.

**OldStVincents.org
131 South Main St.
(See map inset)
573-335-1631**



The North vs. The South

The United States was engaged in Civil War. Battles raged across the nation, and Cape Girardeau was no exception.

On April 26, 1863, the calm of an early spring morning was shattered as the Union and Confederate armies engaged in a fierce, four-hour artillery battle that would come to be known as the Battle of Cape Girardeau. As the battle wound down, the air was heavy with smoke and the smell of gunpowder. There were casualties: 23 Union and 30 Confederate. The 'War Between the States' tore deeply at the very fabric of our nation. Stop by the Convention & Visitors Bureau to pick up a free, detailed brochure with map, Driving Tour of Civil War Sites of Cape Girardeau, which enables you to explore these sites at your own pace.

Fort D

8 Cape Girardeau was a divided community during the war. While there were Union and Confederate sympathizers, the city was firmly held for the duration of the war by Union forces. Fort D, constructed in the summer of 1861 by Union troops under the leadership of Lt. John Wesley Powell, is the only remaining Civil War fort out of four that once protected the city of Cape Girardeau from Confederate attack. Today, the earthwork walls remain intact along with displays and historical signage that recounts the history of Fort D.

Fort D Days brings the old fort's storied past back to life with a Civil War encampment featuring living history demonstrations, food, live music and cannon fire. Step back in time at historic Fort D, and experience anew the echoes of a now distant war that pitted brother against brother. Mark your calendars for living history events every Memorial Day, Fourth of July and Labor Day.

**FortDHistoricSite.com • 920 Fort St.
(Area L11 on map) 573-335-1631**

Common Pleas Courthouse

9 Completed in 1854, this majestic courthouse sits high atop a hill overlooking the historic downtown and offers yet another spectacular view of the Mississippi River. This property has played a big part in Cape Girardeau's history from Indian council meetings to present day. During the Civil War, the Union provost marshal had his headquarters in the courthouse, and a dungeon in the basement housed disloyal locals, captured rebels, disorderly Union soldiers as well as people awaiting trials.

Today, the richly-shaded courthouse grounds, known as Ivers Square, are home to USCT, Union and Confederate memorials, and the gazebo plays host to Old Town Cape's Tunes at Twilight seasonal concert series.

**44 North Lorimer St.
(See map inset)
573-335-1631**

Other Civil War Sites

- ~ Site of Battle of Cape Girardeau
- ~ Longview House: Site of Battery B
- ~ Sites of Forts A, B and C
- ~ Minton House: Smallpox Hospital
- ~ Confederate and Union Memorials
- ~ U.S. African American Infantry Graves at Fairmount Cemetery
- ~ Old Lorimer Cemetery
- ~ Port Cape Girardeau
- ~ USCT Memorial



Family Fun

Jump into family fun for all ages in Cape Girardeau!

Cape Splash Family Aquatic Center

10 Enjoy three and a half acres of fun in the sun at Cape Splash Family Aquatic Center. Race down the 265 foot mat racer slides or be adventurous on the 259 foot triple drop slide or in the vortex pool. Little ones can play to their heart's content at the spray pad or the watery playground with zero depth entry. Kick back and relax under a shady funbrella or grab a tube and float along in the 700 foot lazy river. Ship Wreck Island has sailed into Cape Splash, and your little ones will love playing on this pirate ship. Cape Splash is an affordable water park that provides waves of fun for families.

Visit Cape.com/Discover/Cape-Splash-Family-Aquatic-Center
1565 North Kingshighway
(Area F5 on map)
573-339-6343

Discovery Playhouse – A Children's Museum

11 The Discovery Playhouse brings out the child in everyone and provides an entertaining and educational family experience. Two floors of fun offer opportunities to learn through hands-on exhibits, play stations and interactive models. The first floor is ideal for infants to age 6, with a kid-sized grocery store, bank, nursery, interactive water garden and more. Upstairs, the newly completed second floor is set up for ages 6 through 12 with a Tinkerer's lab, an art studio, a theatre stage, a Ninja Warrior-esque obstacle course and an airplane where your kid can sit in the pilot's seat. You'll have a hard time convincing your little ones it's time to go!

DiscoveryPlayhouse.org • 502 Broadway (See map inset)
573-335-PLAY (7529)

Melaina's Magical Playland

12 The only one of its kind in the area, this public playground is specifically designed to allow children with special needs to experience the joy of playing outdoors on the same equipment with typically-developing children. The playground offers integrated activities to foster a mutual respect and acceptance through fun-filled interaction and was constructed in loving memory of Melaina, daughter of local KFVS12 news anchor Jeff Cunningham and his wife Andrea. Melaina's spirit lives on as this inspiring play area brings everyone together in a place where fun knows no limitations.

MagicalPlayland.org • 2289 County Park Dr. in Cape County Park North
(Area B1 on map)





Lazy L Safari Park

- 13** Lazy L Safari Park is not your typical zoo. Filled with hundreds of exotic animals and more than 50 different species, visitors are offered a completely self-guided experience. Visitors can walk through the main barn, petting zoo, animal nursery and park grounds at their own pace.

Take a stroll along the creek while gazing into the fields to watch zebra or antelope graze. Go on "safari" and feed the pygmy goats, watch baby animals, peer into the reptile aquariums or check out the emu eggs in the incubator. You won't want to miss the deer, wallabies, kangaroos, porcupines, tortoises, zebras, camels, llamas, donkeys, ibex, aoudads, antelope, sheep, alpacas, rheas, ostrich, birds, reptiles and more. A gift shop, picnic shelter and snack shop round out a fun, family experience.

**LazyLSafari.com • 2763 County Road 618
(Area I1 on map) 573-243-7862**

Levi's Adventure Trail

- 24** Explore a variety of play at Levi's Adventure Trail, an ADA-compliant playground. The park was created to honor Levi Steven Collom, a local child who passed unexpectedly before his fourth birthday, and is modeled after the campground at Current River – one of his favorite places. Featuring rock-climbing structures, aquatic attractions, a zip line, swings, slides, sand play and more, explore the incredible play area inspired by Levi.

**LevisAdventureTrail.com
2400 County Park Dr.
573-243-1052 (Area B3 on map)**



Cape Girardeau Public Library – A Destination Library

- 14** This state-of-the-art destination library opens up new worlds for all ages. Children will love the creative play space, literacy computers, gaming systems and engaging programs. Teens have their own space complete with gaming systems and the hottest young adult titles.

The rest of the building includes a 20-seat computer lab, three small group tutoring rooms, a genealogy room, DVDs, more than 100,000 books, magazines, music CDs, audiobooks and a variety of comfortable seating. Free wi-fi is available throughout the building. Access to the library's catalog and online databases is available through the library's website. Be sure to check out the library's online calendar to see what events are scheduled during your visit.

**CapeLibrary.org
711 North Clark St.
(Area I7 on map) 573-334-5279**



Family Fun

Cape Girardeau Conservation Nature Center

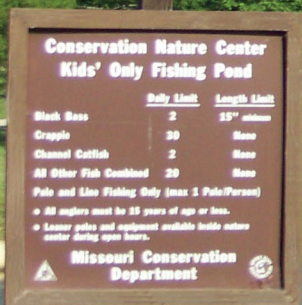
12 The Cape Girardeau Conservation Nature Center showcases the rich cultural history and diverse natural resources of southeast Missouri. The nature center features a 160-seat auditorium, three classrooms, hands-on exhibits for all ages, scientific research laboratory, freshwater aquariums and indoor wildlife viewing area. Don't forget to spot the queen bee in the beehive – safely contained within plexiglass. Your little ones will love making rubbings of animal footprints. Check out a free hiking backpack full of activities to take along on a hike or a kids' fishing kit to toss in a line in the kids-only fishing pond just outside.

The gift shop also features a variety of educational books, DVDs and nature-related items. Programs are offered for all ages, ranging from monthly age-specific programs to large special events.

Outside the nature center, White Oak Trace features two miles of nature trails, allowing visitors to traverse rolling river hills marked by sinkholes and deep hollows, and to explore ravines covered with prominent stands of tulip poplar and oak. The Trace also connects to Wood Duck Swamp, Maple Hollow Trail and the Cape LaCroix Recreation Trail.

Nature.Mdc.Mo.gov/Discover-Nature/Places/Cape-Girardeau-Conservation-Nature-Center
(Area C2 on map) 573-290-5218

Additional opportunities for family fun abound in Cape Girardeau, from zip lines to indoor swimming and more.



Safari Playland

16 Safari Playland boasts over 11,000-square-feet of fun for the entire family with inflatables, arcade games, Bazooka Ball, Bumper Balls and a Zipline. The toddler playland for ages 5 and under keeps your littles playing safely.

SafariPlayland.com • 3049 William St. in West Park Mall (Area E10 on map) 573-334-7070

Ultimate Air Trampoline Park

66 Wall-to-wall trampoline action with multiple trampoline playing zones, trampoline basketball courts, a foam pit and more indoor fun.

ultimateair.com • 4240 Nash Road 573-339-5867

Sports Action

Cape Girardeau is **THE** regional sports center for southeast Missouri and southern Illinois.

Here you can watch a roller derby match or an indoor rodeo or, if you prefer, you can participate in a 5K run or an organized cycling ride through our beautiful countryside.

For collegiate sports fans, there's a year-round schedule of exciting Southeast Missouri State University Redhawks' events. You can enjoy a great game of baseball at beautiful Capaha Park, the hard-hitting action of a Houchens Stadium football game, a thrilling game of basketball at the Show Me Center or an exciting volleyball match at Houchens Field House.

As a proud host of the Missouri Special Olympics Outdoor Championships and the Missouri State High School Activities Association State Championships in volleyball and golf, Cape Girardeau is a popular destination for sports of many types. When teams play in Cape Girardeau, everyone wins!

The Cape Girardeau Sportsplex is a brand new 125,000-square-foot indoor complex with two turf regulation soccer fields, six hardwood basketball courts that convert into 12 volleyball courts and high-end amenities that your team will love. The state-of-the-art Sportsplex is open for business! Learn more at **VisitCape.com/Groups**

Root for the home team and cheer on the Cape Catfish, an official prospect league baseball team. The Catfish take on challengers in the Capaha Field located inside Capaha Park. Families of all ages enjoy great views!

Visit CapeCatfish.com for tickets and more information.



Great Outdoors

Stunning scenery and breathtaking overlooks.

When it comes to the great outdoors,

Cape Girardeau is a natural!

Trail of Tears State Park

17 Featuring some of Missouri's most breathtaking scenery, the beautiful and pristine, 3,415-acre Trail of Tears State Park offers a wide variety of activities and amenities to visitors. The park is a certified site on the Trail of Tears National Historic Trail. Its interpretive center features exhibits that detail the forced relocation of the Cherokee, as well as the park's many natural features. Licensed anglers can cast their lines in Lake Boutin, which has been stocked with bass, bluegill and catfish. An observation deck positioned high atop one of the park's majestic river bluffs provides a very impressive view of the Mississippi River as well as southern Illinois. Hikers are sure to enjoy the park's numerous trails, including Peewah and Sheppard Point, which also offer spectacular views from the river bluffs. In winter months, those bluffs serve as roosting sites for bald eagles which can be seen soaring effortlessly up and down this section of the river. Camping sites, from primitive to RV-ready, are also available. Trail of Tears State Park, just 12 miles north of downtown Cape Girardeau, provides an ideal setting for both heritage tourists and outdoor enthusiasts and was voted the Number 1 heritage trail by *Midwest Living* magazine.

**MOSStateParks.com/Park/
Trail-Tears-State-Park
429 Moccasin Springs,
Jackson (Area P1 on map)
573-290-5268**

Old Mississippi River Bridge Scenic Overlook and Park

18 When Cape Girardeau's original bridge was completed in the summer of 1928, it was hailed as The Gateway to the Ozarks and provided an invaluable and vital link between the states of Missouri and Illinois. The portal of the old bridge has been preserved. At the overlook, there is a viewing scope that provides a close-up view of nature and commerce on the Mississippi River.

The River Campus Trail provides a leisurely walk along historic grounds bordering the river with a variety of interpretive signage providing valuable insight. For example, you can learn more about Missouri's largest American beech tree located along the trail.

**VisitCape.com/Discover/Park
Morgan Oak at Spanish St. (See map inset)**

Cape Rock Scenic Overlook

19 Cape Rock is the site of the original trading post established by Ensign Girardot, for whom the city is named. This scenic overlook contains 21.3 acres and offers a breathtaking view of the Mississippi River from the observation area above and at river level below. Take in the excellent views of the Mississippi River from this vantage point with a picnic on the tables at the site.

**VisitCape.com/Discover/Parks
North Cape Rock Dr. (Area P5 on map)**

Plan your outdoor adventure at
<https://www.visitcape.com/discover-category/great-outdoors>

Capaha Rose Garden



20 In the 1940s, Cape Girardeau was known as the City of Roses thanks to an incredible garden that lined Highway 61 between Cape Girardeau and Jackson. Capaha Rose Garden is a living tribute to Cape Girardeau's legacy as the City of Roses and features a large variety of stunning blooms.

Maintained by local garden clubs, the garden is a gorgeous reminder of those bygone days. In addition to a garden full of roses, an azalea and butterfly garden can also be enjoyed.

VisitCape.com/Discover/Parks
1400 Broadway in Capaha Park (Area J7 on map)

Hit the Trail!

Cape Girardeau has a wide variety of trails sure to meet all ability levels and interests, from challenging hiking and biking to walking and even roller blading. So lace up those running shoes or hiking boots and take the first step!



Cape LaCroix Recreation Trail

21 This six-mile, fully-accessible, multi-use trail winds its way through the heart of Cape Girardeau providing a number of recreational opportunities. This trail connects to the White Oak Trace trail system that extends the adventure! (Trailheads at areas E4, G7, C2 and I12 on map)

Peewah Trail

17 Traversing more than ten miles through the rugged Indian Creek Wild Area at Trail of Tears State Park, Peewah is a moderately difficult trail that offers a variety of options from day use to overnight stays. (Area P1 on map)



Sheppard Point Trail

17 The three-mile hike along the difficult Sheppard Point Trail highlights Trail of Tears State Park's sharp ridges, steep ravines and beautiful bluffs, providing a great place to view eagles, especially during winter. (Area P1 on map)

Other Trails

- ~ Riverwalk Trail
- ~ Bollinger Mill Trail
- ~ Lake Trail
- ~ River Campus Trail
- ~ Juden Creek Trail
- ~ Klaus Park Trail

Maple Hollow Trail

12 This paved, one-mile, moderately-difficult loop trail features some steep ups and downs through a beautiful densely-wooded area in Cape County Park North. (Area C2 on map)

White Oak Trace

12 While at the Conservation Nature Center, enjoy the Trace. With a section that is fully accessible and other sections that are quite challenging, these two miles of nature trails take visitors through a landscape marked by rolling river hills, sinkholes, deep hollows and ravines. Different legs of this extensive trail system promise a brand new experience every time you traverse the paths.

(Area C2 on map)

For additional information and directions, go to
VisitCape.com/Discover/Hiking-and-Biking



Great Outdoors

Capaha Park

- 22** The oldest park in Cape Girardeau, Capaha Park boasts disc golf, Capaha Rose Garden, a brand new playground, a bandshell, Capaha Field and picnic shelters. A paved walkway circles a quarter mile around a fishing pond with ducks, geese and picturesque fountains.

**1400 Broadway
(Area J8 on map)**

Riverfront Park

- 26** Stroll along the Mississippi River at Riverfront Park. This park features a paved walking trail right along the Mighty Mississippi that connects with Red Star Access $\frac{3}{4}$ of a mile north of the Broadway floodgate. The trail stretches over a mile and a quarter in its entirety. Riverfront Park is located on the river side of the floodwall and features the Welcome to Cape Girardeau mural. Grab a seat and watch the barges go up and down river from this park.

Broadway at Water St. (Area M9 on map)

Arena Park

- 23** The home of the SEMO District Fair, Arena Park features tennis courts, baseball and softball fields, sand volleyball and basketball courts and has a connection to the Cape La Croix Recreation Trail.

410 Kiwanis Dr. (Area G7 on map)

Cape County Park North and South

- 12** Cape County Park North is home to the Conservation Nature Center, Melaina's Magical Playland, a fishing pond, numerous hiking trails and our newest disc golf course.

2400 County Park Dr. (Area C2 on map)

- 24** Cape County Park South includes an expanded playground, a braille nature trail and a fishing pond.

**Across divided road from
2400 County Park Dr.
(Area B3 on map)**

Kiwanis Park

- 25** This scenic park is ideal for families with children with two playgrounds, one well-suited for toddlers. Mostly rolling grassy hills, this park features open ground to enjoy, a small pond and Cape Girardeau's only off-leash dogpark, Dogtown.

2100 Rotary Dr. (Area I4 on map)





Tee Time!

The rolling hills of southeast Missouri provide the perfect terrain for a challenging game of golf. Lush fairways, superb greens and long seasons make Cape Girardeau a popular destination for serious and recreational golfers alike.

27 The Tee House Complex

2901 Hawthorne Rd. (Area F7 on map)
573-332-0860 · TeeHouseComplex.com

28 Bent Creek Golf Course

Voted top public golf course in Missouri by *Rural Magazine*.

2200 Bent Creek Dr., Jackson (Area D1 on map)
573-243-6060 · BentCreekGC.com

29 Cape Jaycee Municipal Golf Course

3280 Perryville Rd. (Area G1 on map)
573-334-2031 · CityOfCapeGirardeau.org/
Departments/Parks/JayceeGolf

30 Cape Girardeau Country Club*

250 Country Club Dr. (Area O4 on map)
573-335-8251 · CGGolfClub.com

31 Dalhousie Golf Club*

This club is a midwest golf sanctuary with a direct connection to the Earl of Dalhousie in Scotland. *Golf Digest* has ranked Dalhousie as the number one course in Missouri.

4700 Cord's Way (Area B12 on map)
573-332-0818 · DalhousieGolfClub.com

*Although fully private, these clubs have reciprocal policies with other clubs. Call to check.

Disc Golf

Enjoy one of Cape Girardeau's two disc golf courses, both with their own unique terrain and challenges.

22 1400 Broadway in Capaha Park (Area J8 on map)

12 2400 County Park Dr. in Cape County Park North (Area C2 on map)



For a complete list of Cape Girardeau's parks and their locations, go to VisitCape.com/Discover/Parks

Picture This

Cape Girardeau has quality art down to a science.

Missouri Wall of Fame Mural

32 From President Harry S. Truman to outlaws Frank and Jesse James, from famed sports broadcaster Jack Buck to acclaimed author Mark Twain, you'll find these historic figures and more on the Missouri Wall of Fame. This outdoor mural includes more than 45 famous individuals who were born in Missouri or achieved fame while living in this state and adorns part of the downtown floodwall. Cape Girardeau's own contribution to the mural includes national radio talk show host Rush Limbaugh and NASA astronaut Linda Godwin.

Independence at Water St.
(See map inset)

Mississippi River Tales Mural

33 The largest and most dramatic of the city's murals is the Mississippi River Tales Mural, which is also located on a portion of the downtown floodwall. Covering nearly 18,000-square-feet, this 1,100-foot-long mural spans the length of the downtown shopping district and features 24 historically-themed panels that vividly portray Cape Girardeau's rich history and heritage. Descriptive markers provide a detailed explanation of each, so you can walk along this vibrant mural and discover the history of Cape Girardeau as you go. **Broadway at Water St. (See map inset)**





City-Wide Weekend of Arts and Crafts Fairs

Every November, hundreds of artisans, crafters and vendors set up shop in venues across Cape Girardeau for a weekend of arts and crafts. Mark your calendar for the third weekend in November and check VisitCape.com/Events for full details.

First Friday with the Arts Gallery Stroll

First Friday with the Arts is a lively community event that brings art enthusiasts together from 5 to 9 p.m. on the first Friday of each month. Galleries across town extend their hours for guests to stroll through various exhibits, and restaurants and shops get in on the fun with extended hours and complementary events.

Art Galleries and Studios

Cape Girardeau's nearly 20 art galleries and studios feature diverse collections with many pieces available for purchase. Every gallery in Cape Girardeau has its own unique personality, offering visitors access to a wide array of art, including paintings, handcrafted gifts, glass beads, pottery, photography and much more. For a complete list of art venues, go to VisitCape.com/Discover/Arts

Christmas Arts & Crafts Extravaganza



River Campus Art Gallery



Arts Council of Southeast Missouri



Picture This

Inland Waterways Mural

5 Located indoors near the entrance of the Rosemary Berkel and Harry L. Crisp II Southeast Missouri Regional Museum, this mural celebrates the river during the age of the steamboat. The mural's centerpiece, Inland Waterways: The Highways of Our Heritage, depicts the historic Great Steamboat Race of 1870 between the Robert E. Lee and the Natchez. This impressive mural was painted by renowned Missouri artist Gary Lucy.

SEMO.edu/Museum • 518 South Fountain St. in River Campus
(Area L11 on map) 573-651-2260

Southeast Missourian Murals

34 These two tiled murals are located outside on the east side of the Southeast Missourian building. Unveiled in 1947, they were the first of their kind in America and took ten years to develop and two years to make. The mural on the left depicts the art of printing and features the Gutenberg press and area newspaper pioneers. The mural on the right, Gathering & Disseminating News, features famous visitors to Cape Girardeau, including John Philip Sousa, Billy Sunday and Harry S. Truman.

301 Broadway (See map inset)



Bicentennial Mural

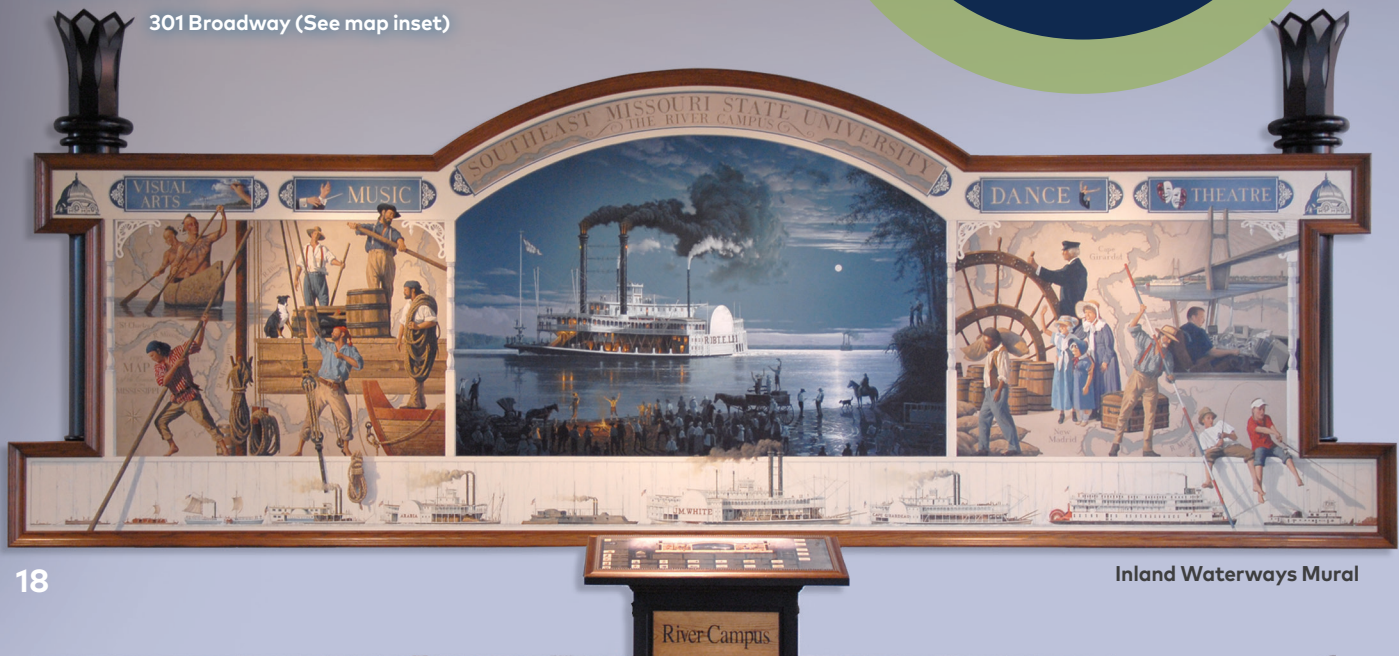
35 The 40- by 22-foot Bicentennial Mural depicts the founding of Cape Girardeau and was dedicated to the city on its 200th anniversary.

Broadway at Fountain St.
(See map inset)

Jake Wells University Mural

36 Located on the main campus of Southeast Missouri State University, the Jake Wells University Mural is a memorial to the strength and determination of the people who have lived and worked in southeast Missouri. Commemorating the university's centennial, the 38- by 21-foot mural is one of the largest indoor murals in Missouri.

Library.SEMO.edu • 1 University Plaza in Kent Library
(Area K8 on map) 573-651-2235



In addition to the murals previously listed, there are a number of other murals just waiting to be discovered indoors and outdoors across the community. See them all!

2 The One City Mural

610 Independence St.

26 Welcome to Cape Girardeau Mural*

Themis at Water St.

36 William Faulkner Mural

1 University Plaza in Kent Library (Area K8 on map)

37 Coca-Cola Mural*

19 North Water St.

38 River Heritage Mural*

11 South Spanish St.

39 Main to Spanish Pedestrian Alley Murals

39 Riverfest Mural*

117 North Main St.
Best seen from the
100 block of
Spanish St.

40 Heritage of Music Mural*

535 Broadway

40 The Indie House Mural

605 Broadway St.

41 History of Medicine Mural

1701 Lacey St. in the lobby
of Southeast Hospital
(Area J8 on map)

42 St. Francis Mural

211 Saint Francis Dr.
in Saint Francis Medical
Center's Healing Garden
(Area E9 on map)

*See map inset

Calendar of Events

Mark your calendar! Here's a great overview of some of Cape Girardeau's annual events. For a complete, up-to-the-minute listing of events, simply go to VisitCape.com/Events.

- ~ First Friday with the Arts Gallery Stroll
- ~ Tunes at Twilight Concert Series
- ~ Fort D Days
- ~ SEMO District Fair
- ~ Outdoors and Sports Shows
- ~ Parade of Lights
- ~ Tour de Cape Bicycle Ride
- ~ Downtown Open House
- ~ Arts, Crafts and Quilts Shows
- ~ Independence Day Celebration
- ~ Classic Car Swaps, Auctions and Shows
- ~ Southeast Missouri State University Homecoming
- ~ Holiday Parade of Lights
- ~ Day on the River
- ~ Outdoor Concerts
- Shipyard Festival
- Cape Comic Con
- Cape Municipal Band



Shopping

As the regional hub for residents throughout the tri-state area, Cape Girardeau is packed with shopping opportunities.

Plan your shopping trip to Cape Girardeau at [VisitCape.com/Discover-Category/Antiques-and-Shopping](https://www.visitcape.com/discover-category/antiques-and-shopping), where you'll find a list of the unique, locally owned stores located throughout town.

Antiques

Cape Girardeau's collection of nearly 15 antique stores is second to none, attracting serious collectors and curious browsers from near and far. Each store has its own distinct personality and treasure trove of possibilities to explore.

Downtown Shopping District

From offerings available only in Cape Girardeau to collectibles, jewelry, boutiques, unique gifts and much more, downtown Cape Girardeau features a variety of quality retailers.

(Area M9 on map)





WEST PARK

West Cape Shopping District

On the west side of Cape Girardeau, you'll find dozens of familiar retail favorites as well as some local specialty shops. You're sure to locate that perfect gift for everyone on your list and something for you, of course, right here in Cape Girardeau.

(Areas D10-12, E10-11, F10-11 on map)



Photo by Daniel Doelling

Uniquely Cape

With the freshest products around, Cape Girardeau's markets are your key to healthy, delicious foods and merchandise from farm-fresh eggs to local honey and more.

Cape Riverfront Market

43 The Cape Riverfront Market takes place on Saturdays May through October and features fresh produce, meats, cheeses, baked goods, jams and arts and crafts – all grown, produced or prepared locally. Live music, demonstrations and food trucks are all regular fixtures.

www.facebook.com/CapeRiverfrontMarket
35 South Spanish St. (See map inset) 573-334-8085

Cape Farmer's Market

44 The Cape Farmer's Market takes place on Thursday afternoons April through November and boasts locally sourced produce, honey, plants, herbs and more.

West Park Mall at the intersection of
William St. and Mount Auburn Rd.—
Use Mount Auburn Rd. entrance
(Area E10 on map)
573-334-7676

Rush Limbaugh Hometown Driving Tour

Radio talk show host Rush Limbaugh was born and raised in Cape Girardeau. A self-driving tour will take you past the hospital where Rush was born and his childhood home, now a private residence. You will see where he attended school and cruised Broadway, which was a tradition during Rush's high school days. You'll discover the radio station where this record-setting broadcaster first started his career. As you take in the history and heritage of Cape Girardeau, you'll discover what influenced and impacted Rush in his early years. Stop by the Convention & Visitors Bureau for a free Rush Limbaugh Hometown Driving Tour brochure.



"Gone Girl" Driving Tour

Cape Girardeau welcomed a little piece of Hollywood to town in the Fall of 2013 as Gillian Flynn's novel, *Gone Girl*, came to life. Cape Girardeau played the role of North Carthage, Missouri in the film directed by David Fincher that stars Ben Affleck, Neil Patrick Harris, Rosamund Pike and Tyler Perry. Filming took place all over town in about 30 locations for around six weeks.

Download your free driving tour to see what filming was like while cast and crew were here in Cape Girardeau at www.VisitCape.com/Discover-Category/Driving-Tours or pick up your free printed copy at the CVB office.



Cape Girardeau Souvenirs

46 Looking for that perfect souvenir to remember your time in Cape Girardeau? The Cape Girardeau Convention & Visitors Bureau has you covered. Take your pick from a selection of T-shirts, books, coffee mugs, postcards and more!

VisitCape.com
220 N. Fountain St.
(Area L9 on map)
573-335-1631

Freedom Corner

22 In 1950, 'Strengthen the Arm of Liberty' was the theme established by the Boy Scouts of America as they celebrated their fortieth anniversary. As a part of that celebration, Kansas City businessman J.P. Whitaker, who was the scout commissioner of the Kansas City Area Council at that time, had the idea of creating and placing replicas of the Statue of Liberty throughout the country. By 1952, Boy Scout troops had purchased and donated some 200 replicas of the Statue of Liberty in 39 states across the nation. Manufactured in Chicago, the stamped copper statues originally cost \$350 plus freight. They stand approximately 8½ feet tall without the base and weigh about 290 pounds. Unfortunately, over the years, nearly half of the statues have been lost or destroyed, with preservationists being able to account for only about 100 of them. One of those unique pieces of Americana still proudly stands at Freedom Corner in Cape Girardeau. Here, Lady Liberty still proudly proclaims "Let freedom ring!"

Broadway at West End Blvd. (Area J8 on map)

African American History Self-Guided Tour

9 This driving tour will guide you through the world of Cape Girardeau during the late 1800s. You'll discover the area's rich African American history, meet prominent figures that shaped the world beyond Cape and see significant historic sites. If you're in the mood to do some walking, you can explore even more of the past.

Download an informational brochure: www.VisitCape.com/Discover-Category/Driving-Tours

44 North Lorimier St.



Come Play

Check out of the office and into one of our great hotels and let the fun begin. Come Play in Cape Girardeau!



Live Entertainment

Nationally and internationally renowned entertainment can be found in Cape Girardeau year round. From theater productions to monster trucks and musical concerts to your favorite Disney show, you can find an abundance of lively entertainment options in Cape Girardeau.

River Campus of Southeast Missouri State University

5 Located at the River Campus, the **Bedell Performance Hall** hosts outstanding performances by groups from across the country and around the world. This state-of-the-art performance space with seating for 950 guests has played host to theatrical productions, large instrumental and vocal music concerts, musicals and ballets. The 205-seat **Robert and Gertrude Shuck Music Recital Hall** has beautiful stained-glass windows and is acoustically "dressed" for mid-sized musical performances. Also part of the complex is the **Rust Flexible Theatre**. With 180 seats, this space caters to smaller, more intimate, theatrical productions. A wide range of theatre and performing arts productions are offered year round; check their calendar to plan your night out!

RiverCampus.org

518 South Fountain St. (Area L11 on map) 573-651-2265





Show Me Center

- 47** Whether you prefer to see world-renowned entertainers, monster truck rallies, foot-stomping rodeos, massive arts and crafts shows, collegiate sports or lawn and garden shows; the 7,600-seat Show Me Center has something to entertain you during your visit to Cape Girardeau. The center is also the home court for Southeast Missouri State University's Redhawks basketball teams. With numerous events throughout the year, you're sure to find a show, performance or sporting event to fit your taste!

ShowMeCenter.biz
1333 North Sprigg St. (Area L6 on map)
573-651-2297

Gaming

Century Casino

- 48** This state-of-the-art gaming and entertainment destination has all of the amenities and services you are looking for. The casino offers an exciting gaming experience with the hottest slots featuring a wide variety of popular games, table games, including roulette, craps, blackjack, live-action poker tables and a breathtaking view of the Mississippi River.

When it's time to unwind, check out the **Lone Wolf** for live entertainment. If you can pull yourself away from the dance floor, visit one of the restaurants, all of which offer a variety of menu options with their own unique flair.

777 North Main St.
(Area M7 on map)
573-730-7777

©2019 CENTURY CASINOS, INC. Century Casino Cape Girardeau is a registered trademark of CENTURY CASINO, INC. Must be 21 or older. Gambling problem? Call 1-888-BETS-OFF or e-mail freehelp@888betsoff.org



Tunes at Twilight Concert Series

- 9** For six weeks in the spring and six weeks in the fall, visitors will love Old Town Cape's Tunes at Twilight, an award-winning Friday night outdoor concert series. Performers play in a gazebo under a canopy of trees on the grounds of the Common Pleas Courthouse, high atop a hill overlooking the historic downtown and Mississippi River.

DowntownCapeGirardeau.com/Tunes-at-Twilight
44 North Lorimier St. (See map inset)
573-334-8085



Come Play

Day Spas

Throughout our community, you'll find a number of day spas and salons where you can relax and rejuvenate during your visit. Multiple facilities showcased at

[VisitCape.com/](https://www.VisitCape.com/Discover-Category/Come-Play)

Discover-

Category/

Come-Play

give you a range of indulgent options.



Wineries and Microbreweries

Enjoy views of the grapevines while sipping local wine at one of the many area wineries and vineyards or take a tour with the brewmaster before sampling the beer at one of Cape Girardeau's microbreweries. Find a full listing of opportunities at VisitCape.com/Discover-Category/Come-Play



DINING

Enjoy a Taste of Cape!

With more than 130 restaurants, you won't go hungry in Cape Girardeau, and more than 40 of these are unique to our river city. Whatever you're hungry for you'll find it, with Cajun, Chinese, Indian, Italian, Irish, Pan Asian options and many more. A comprehensive dining guide is available in print at our office or online at VisitCape.com/Eat



Stay

Bed and Breakfast

If a cozy bed and breakfast is more to your taste, give our charming B&B a try. For more information, go to VisitCape.com/Stay.

Neumeyer's Bed & Breakfast

50 Circa 1910, this home has two guests rooms and two bathrooms and is within walking distance of downtown.

25 South Lorimer St.
(See map inset) 573-335-0449

Vacation Rentals

Live like a local in a homey vacation rental. Find a listing of these unique properties at VisitCape.com/Stay.



Campgrounds and Cabins

For visitors passionate about the outdoors, the Cape Girardeau area also offers numerous sites for RV and tent camping as well as cabins with many sites adjacent to the best attractions in our area. For more information, go to VisitCape.com/Stay.

Cape Camping & RV Park

51 CapeRVPark.com • 1900 North Kingshighway
(Area E4 on map) 573-332-8888

Landing Point RV Park

52 3020 Boutin Dr.
(Area G1 on map) 573-334-7878

River Ridge Winery's Little Log Cabin

53 RiverRidgeWinery.com
(Area F13 on map) 573-264-3712

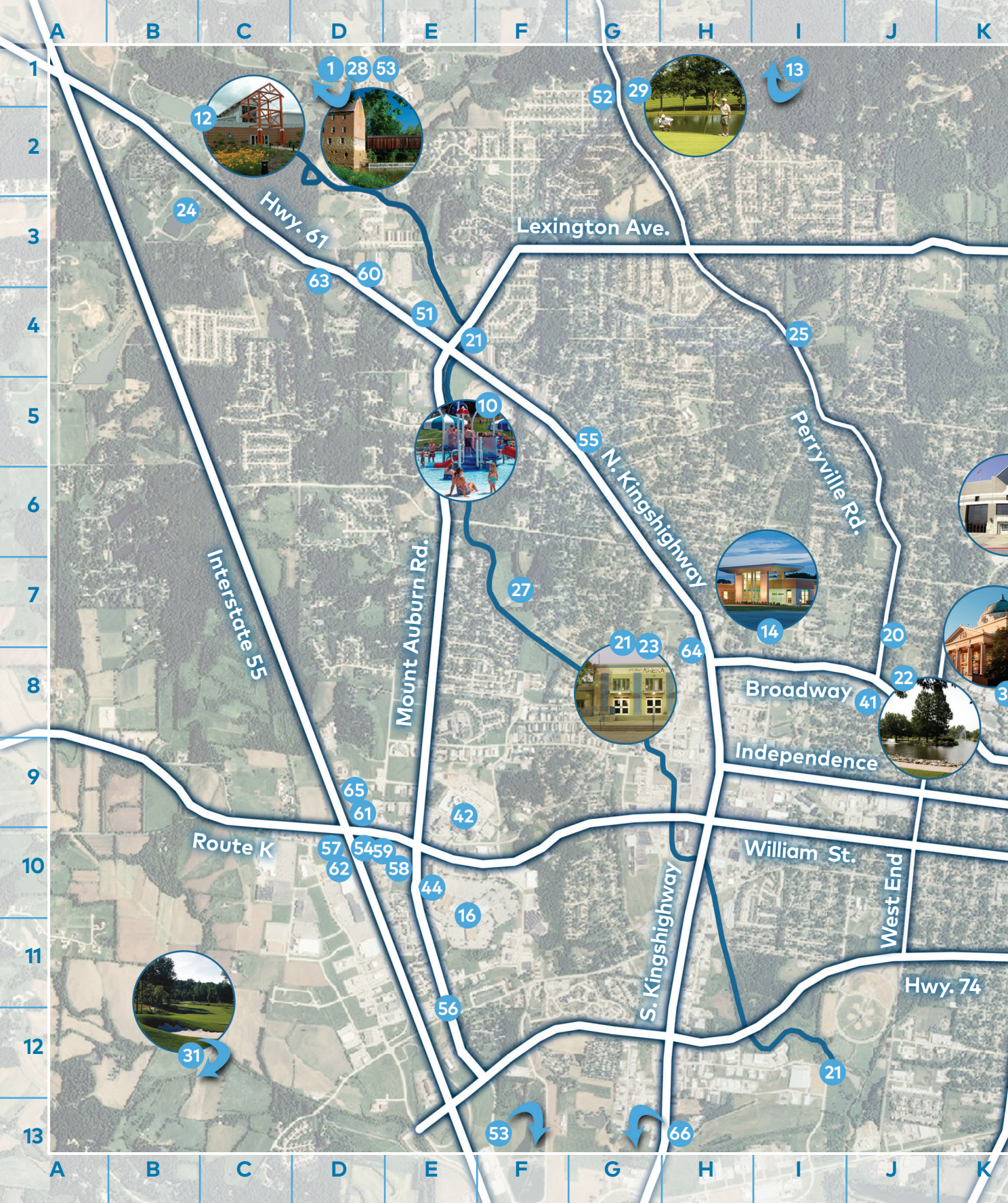
Trail of Tears State Park

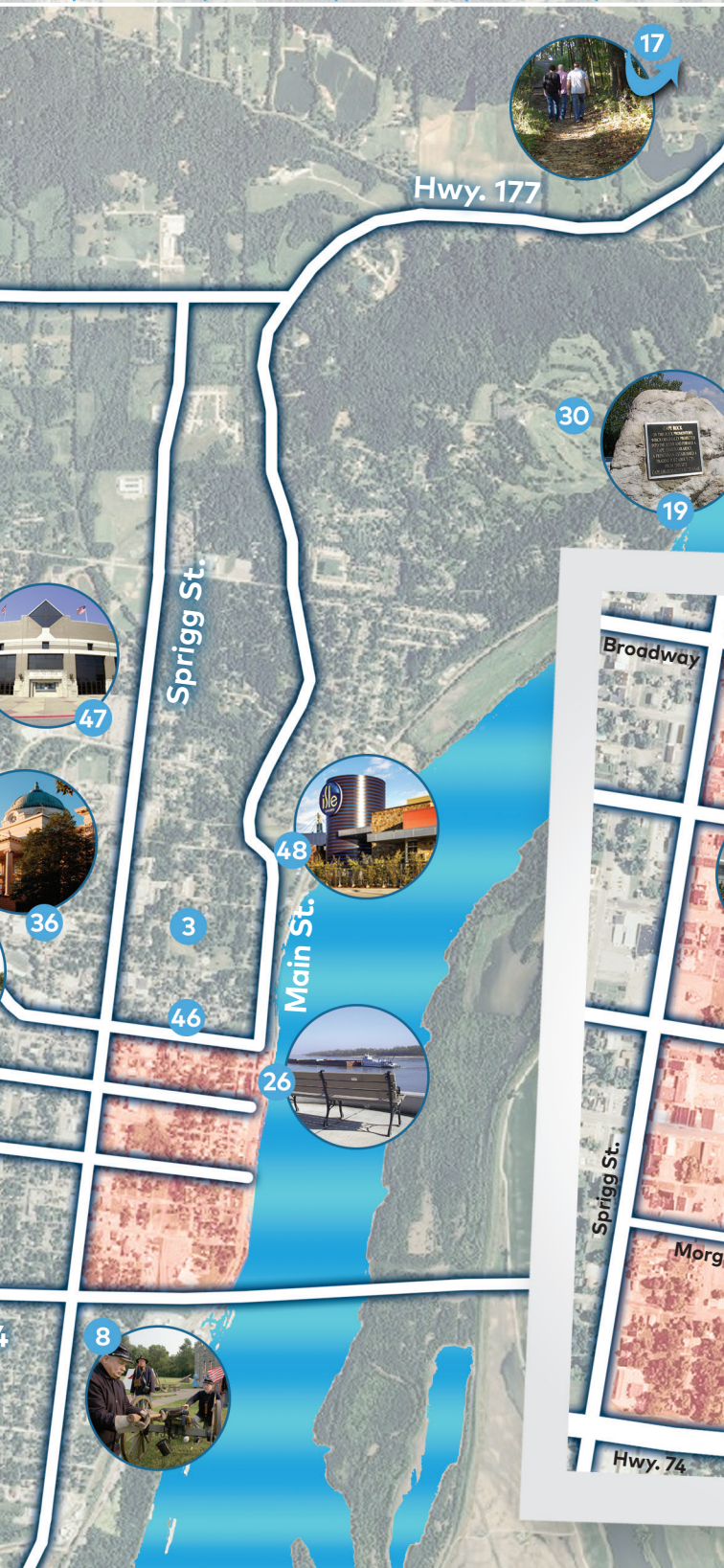
17 429 Moccasin Springs, Jackson (Area P1 on map)
573-290-5268
<https://MoStateParks.com/Campgrounds/Trail-Tears-State-Park>

Hotels and Motels

However you like to rest your head, Cape Girardeau has the accommodations you're searching for. Whether you prefer a full-service suite or a simple single room, our area hotels and motels offer an exceptional variety of amenities such as hot breakfasts and evening snacks. For more information, go to VisitCape.com/Stay.

		AAA Rating	Number of rooms	Breakfast	Smoking	Elevator	Swimming pool	Fitness room	Pets allowed	Internet access
63	America's BestValue Inn 2011 North Kingshighway (Area D3 on map) 573-339-0808 · Super8.com	–	51	Continental	–	–	✓	–	–	Free
54	Auburn Place Hotel & Suites 3265 William (Area D10 on map) 800-331-0445 or 573-651-4486 midamcorp.com/apcap.html	◇◇	133	Hot buffet	Designated areas	–	✓	✓	✓	Free
55	Budget Inn 1448 North Kingshighway (Area G5 on map) 573-334-2828	–	36	–	–	–	–	–	–	Free
56	Candlewood Suites 485 South Mount Auburn (Area E12 on map) 573-334-6868 · CandlewoodSuites.com	◇◇◇	85	Kitchen in rooms	–	✓	–	✓	✓	Free
49	Courtyard by Marriott 400 Broadway St. (Area L9 on map) 573-240-9420 · Marriott.com	◇◇◇	91	–	–	✓	–	✓	–	Free
65	Drury Plaza Hotel & Conference Center 3351 Percy Drive (Area D10 on map) 800-DRURYINN or 573-334-7151 · DruryHotels.com	◇◇◇	168	Hot buffet	–	✓	✓	✓	✓	Free
57	Drury Suites 3303 Campster (Area D10 on map) 800-DRURYINN or 573-339-9500 · DruryHotels.com	◇◇◇	87	Hot buffet	–	✓	✓	✓	✓	Free
58	Hampton Inn 207 South Mount Auburn (Area D10 on map) 573-334-4499 · midamcorp.com/hotels/about-cgicg.php	◇◇◇	86	Hot buffet	–	✓	✓	✓	–	Free
59	Holiday Inn Express Hotel & Suites 3253 William (Area D10 on map) 800-645-3379 or 573-334-4491 midamcorp.com/cgiws.html	◇◇◇	102	Hot breakfast	–	✓	✓	✓	–	Free
61	Pear Tree Inn Medical Center 3248 William (Area D10 on map) 573-334-3000 · DruryHotels.com	◇	78	Continental	–	✓	✓	–	✓	Free
62	Pear Tree Inn West 103 Cape West Parkway (Area D10 on map) 573-651-3000 · DruryHotels.com	◇◇	83	Continental	Designated areas	✓	–	✓	✓	Free
64	Town House Inn 505 North Kingshighway (Area H8 on map) 573-335-2700	–	53	Frig./microwave in rooms	Designated areas	–	–	–	–	Free





CITY MAP

This overview highlights the primary arteries of our community and general location of many sites. Stop by the Convention & Visitors Bureau for a free detailed city map pinpointing all there is to see and do in Cape Girardeau. We have great suggestions and brochures to enhance your visit too!

Close-up of Downtown

