



Official Insiders' Guide

Bakersfield

California

The Bakersfield Sounds

GENUINE GRUB

Chow down on great food you
won't be able to find anywhere else

*Bakersfield's unique
creative culture is
music to your ears*

FAMILY FUN + OUTDOOR ADVENTURE + MAPS & MORE!

Welcome TO THE Streets of Bakersfield

As Bakersfield's Mayor, it is a pleasure to welcome you to our city.

Bakersfield is known for its warmth, hospitality, country music, Basque cuisine, Mexican food, and so much more. I am confident you will find something here to suit your taste, and I invite you to make yourself at home in our community.

In this *Official Bakersfield Insiders' Guide*, you will find tips on how to experience what makes our city special: our music, unique food, racing, craft breweries, locally made products, and outdoor activities—all combined for lots of family fun.

Bakersfield welcomes visitors to conventions, meetings, sports events, and family gatherings, and many others who are simply passing through our city to other locations. Regardless of what brings you here, our city of friendly people will bring you back.

We are glad you've come our way, and hope you find your time in Bakersfield enjoyable.

Respectfully yours,

Karen Goh,
Mayor, City of Bakersfield



*"I came here looking for somethin'
I couldn't find anywhere else..."*

Whatever your reason for visiting us, Bakersfield welcomes you.

In the mid-19th century, a fellow named Col. Thomas Baker settled this area. He let the word out that this was a place where weary travelers could stop and rest: rest themselves and rest their animals. Word soon spread that everyone was welcome to stop and rest in Baker's field.

We dropped the apostrophe long ago, but the name "Bakersfield" caught on. And that welcoming spirit of Col. Baker thrives in California's ninth largest city. We welcome all shapes, all sizes, all colors, and all religions from all over the world. That welcoming spirit? It's in our Bakersfield DNA.

*"Hey, I'm not trying to be nobody
I just want a chance to be myself..."*

Because our city was founded on hospitality, the friendly and knowledgeable staff at Visit Bakersfield look forward to answering your questions: toll free at 866-425-7353 or info@VisitBakersfield.com. You can also check us out on Facebook and Instagram.

*"Trying to find me something better
Here on the streets of Bakersfield"*

Let us show you firsthand that Bakersfield is...
The Sound of Something Better.

With every good wish,

David Lyman, PhD
Manager, Visit Bakersfield



Lyrics from Streets of Bakersfield by Homer Joy



VISIT BAKERSFIELD

515 Truxtun Ave.
Bakersfield, CA 93301
866-425-7353
661-852-7282
Fax: 661-325-7074
VisitBakersfield.com



Produced and published
by Madden Media, LLC
800-444-8768
info@maddenmedia.com
maddenmedia.com

VISIT BAKERSFIELD INSIDERS' GUIDE © 2021.

Reproduction of this guide or of any of the photographs, maps or illustrations contained in this guide, in whole or in part, without prior written permission from the copyright holders is strictly prohibited. *Visit Bakersfield Insiders' Guide* is a publication of **Visit Bakersfield**. Information herein that was supplied by **Visit Bakersfield** businesses is subject to change without notice.

Visit Bakersfield and the publisher shall have no liability for any claims or damages incurred prior to, during or following the conduct of any business listed in this guide, and the reader agrees to hold **Visit Bakersfield**, its agents and employees harmless therefrom.

CAVBOVG21

Inside

OFFICIAL BAKERSFIELD INSIDERS' GUIDE



SALTY'S BBQ AND CATERING



VISIT CALIFORNIA



PETER WOLLESEN

★ Features

2 Genuine Grub

Award-winning food and unique dining experiences will satisfy your taste buds.

6 Hit the Trail

Explore the great outdoors by biking, hiking, and rafting through unspoiled terrain.

12 Fun for the Fam

From museums to petting zoos, find plenty of fun for the whole family.

16 Racing Capital of California

Nothing pumps your adrenaline quite like the loud vroom from the track.

21 Driving the Streets of Bakersfield

Take a leisurely tour of the city without having to leave your car.

22 The Sounds of Bakersfield

Bakersfield boasts a rich music history that stretches far beyond the Bakersfield Sound.



BACK COVER PHOTOS:
Bakersfield Condors by Mark Nessia, Tiki-Ko, CALM Holiday Lights, River's End Rafting, Kern County Scottish Games and Festival, Auto Club Famoso Raceway

26 Bakersfield Brew-haha

Belly up to the bar and sample the local brews on tap.

28 Tastes to Take Home

Take a piece of Bakersfield home with you.

32 On Your Way

Just a short drive from Bakersfield brings you right to perfect daytrip destinations.

36 Big in Bakersfield

Find insider tips on how you can snap photos at big Bakersfield spots.

Maps on page 18






GENUINE

Grub

AWARD-WINNING FOOD
AND UNIQUE DINING EXPERIENCES WILL
SATISFY YOUR TASTE BUDS. 

 Food lovers, you are in the right place.



Bakersfield offers spreads of food from around the globe served in fun and memorable settings. You and your dining companions will have an unforgettable time. But don't just take our word for it. In recent years, Bakersfield's fun food experiences have been featured in the *New York Times*, on Yelp, and on television. Now you can dive in and experience first-hand the exciting food found exclusively in Bakersfield.



For more details, check out the
Downtown Restaurant Guide available at
VisitBakersfield.com » Visitors » Brochures.



If the multiple
courses are
too much,
ask for the
"set up."



Bakersfield is home to one of the largest collections of Basque restaurants in the United States. Customarily, Basque meals are a multi-course feast, served family-style at long trestle tables. Dinner is delivered in courses: soup and bread, salad, beans, French fries, and a meat entrée. Local Basque eateries include **Woolgrowers** (Barbra Streisand and James Brolin's favorite!), **Pyrenees Cafe**, **Chalet Basque**, and **Benji's**.

Insider's tip: if the multiple courses are too much, ask for the "set up," which omits the main meat serving.

Woolworth's Luncheonette is the last remaining Woolworth's lunch counter in the U.S. Where can you go back in time to enjoy classic hamburgers, fries, and milkshakes while sitting at a timeless 74-foot-long luncheonette counter in a 1939 Art Moderne building, with the rest of the building converted to an antique mall? The answer: only in Bakersfield.



CLOCKWISE
FROM TOP
Benji's,
Camino Real
Kitchen & Tequila,
Woolgrowers,
Athena's Greek
Café



Luigi's is one of Bakersfield's oldest continuous family-operated businesses. Generations still flock to this local institution, looking for classic Italian food with a homey feel, served on red-checked tables and surrounded by photos of local sports heroes (see if you can spot hometown hero Frank Gifford). Luigi's has an adjacent grocery store boasting a variety of meats, cheeses, sauces, and award-winning Rio Bravo Ranch olive oil.

Nuestro Mexico has the best tacos in California, according to Thrillist.com: "This bright, colorful, family-run spot packs about three street-tacos worth of steak into a single carne asada taco, but it's not just the quantity of meat that makes it so great. It's marinated in a blend of Mexican spices that pairs perfectly with the fresh grilled flavor."

Punjabi Dhaba is a food truck catering to California's growing number of Punjabi big rig truck drivers, and was featured in the *New York Times Food Section*: "The rotis were flawless, king-size rounds. Each one was thin and even, freckled with char and shimmering. The dough had been rolled and cooked to order, so the rotis came out hot and supple, stacked on a paper plate alongside deli containers



ABOVE & RIGHT
Salty's BBQ and
Catering



of dal and a few plastic spoons. More important, if you order the stuffed paratha—and you must order the stuffed paratha—a \$3 masterpiece that comes, as it should, with a dollop of raita, a few pieces of pickled onion and a single gold foil-wrapped pat of butter, it's best to take a seat and start on it right away."

Guy Fieri featured these seven Bakersfield favorites in his popular Food Network show *Diners, Drive-Ins, and Dives*: Moo Creamery, 24th Street Café, Salty's BBQ and Catering, Pyrenees Café, KC Steak House, Mama Roomba, and Athena's Greek Café.

And PorkChop & Bubba's BBQ ranked 14th among Yelp's "Top 100 Places to Eat in the U.S. for 2020." Raspberry chipotle sauce, anyone? 🍷

ABOVE
Woolworth's
Luncheonette

FOOD AND DRINK Festivals

Check out Bakersfield food and drink festivals for more fun: Bakersfield Uncorked, Basque Festival, Cherry Festival, Country and Craft Beer Festival, Greek Food Festival, Jewish Food Festival, Mac and Cheese Fest, Scottish Festival, Menudo Cook-Off, Village Fest, and more!





PETER WOLLESEN

Bakersfield has lots of sunshine, so that means countless ways to enjoy the outdoors. Biking, hiking, river rafting, fishing, and boating are all found either in the city or close by. The sound of the great outdoors is waiting for you.

LEFT
Near California Living Museum

ABOVE
Kern River Parkway Trail

MICHELLE BECK

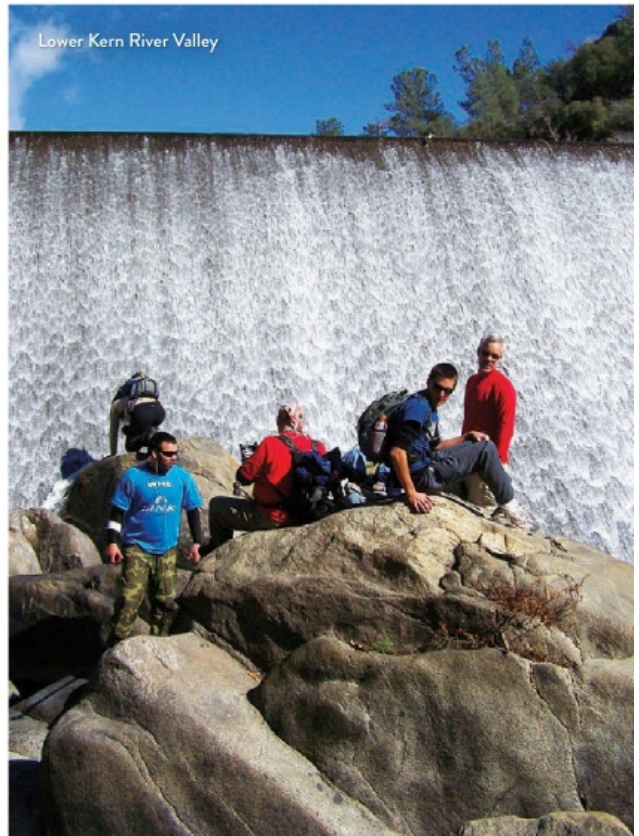
Find wilderness in the city when you visit the **Kern River Parkway**. It begins at the mouth of Kern River Canyon and includes more than 6,000 acres of trails, parks, and waterways extending more than 30 miles to Interstate 5 and beyond. Find all forms of outdoor recreation and nature study, including biking, hiking, paddling, and photography.

Further east, the scenic **Kern River Canyon** offers campgrounds, hot springs, and fishing holes, all while gaining elevation along Highway 178 through the Sierra Nevada. You can hike, mountain bike, rock climb, and fly fish among mountain peaks and lush forests—and don't forget about boating, snow skiing, snowshoeing, and white-water rafting. The Kern River offers whitewater experiences from class I through class V.

To the south is **Wind Wolves Preserve**, the West Coast's largest nonprofit preserve. It includes the entire San Emigdio Land Grant, once owned by John C. Fremont. The preserve is open daily for hiking, mountain biking, and picnicking. There also are seasonal wildflower and wildlife viewing tours by vehicle. More than 153,000 children have participated in the preserve's free outdoor educational programs.

To the west are several national and state recreation areas. The **Carrizo Plain National Monument** offers birding, camping, hiking, bicycling, horseback riding, hunting, wildflowers, and sightseeing. Both **Tule Elk State Natural Reserve** and **Kern National Wildlife Refuge** offer chances to see wildlife close up, either on foot or in your car.

Lower Kern River Valley



Kern River Parkway Trail

Biking

With more than 170 miles of bike trails, lanes, and paths, Bakersfield is made for bike adventures! Start with our 30-plus-mile paved path along the Kern River. The **Kern River Parkway Trail** takes you through a preserved riparian habitat, where you might see rabbits, roadrunners, and other wildlife, all protected from development.

Easy access is provided by several free parking lots along the way, as well as links to local roadways, so you can ride the Kern River Parkway Trail a section at a time or all in one day. The trail also provides a convenient link to California State University, Bakersfield, and a connecting path through the university takes you to shopping, restaurants, movie theaters, and a hotel.

Looking for something more challenging? Try the route some of the world's best cyclists rode when they visited Bakersfield in 2012 for the Amgen Tour of California. The time-trial course featured 18.4 miles of rolling terrain, including more than 850 feet of ascent. Ride the route that challenged the champions. (see the following page for details)

Not many communities have a 30-mile green belt winding through their city, or an outstanding world-class time-trial course, so bring your bike

to ride these routes yourself. The Amtrak San Joaquins line offers free bicycle racks on a first-come, first-served basis on all of its trains, with no reservations required. Unboxed bicycles can also be put in the bin under connecting Amtrak Thruway buses. When you arrive, both Golden Empire Transit and Kern Transit buses offer free bike racks on their buses. That means you and your bike can get to locations throughout Bakersfield or to many outlying Kern County communities, as well as the Lancaster and Santa Clarita Metrolink stations.

Whatever your cycling level, Bakersfield is made for bike adventures.

The new Kern River Parkway Trail brochure has a detailed map with nearby attractions and amenities. Get yours at VisitBakersfield.com » Visitors » Brochures.



Bakersfield Foothills

RIDE THE ROUTE OF THE 2012 AMGEN TOUR OF CALIFORNIA TIME TRIAL

Start at the northeast corner of Bakersfield College at Panorama Drive and Mt. Vernon Avenue. Head north onto Alfred Harrell Highway for an immediate 7% down-grade, where you could reach speeds of nearly 60 miles per hour on this half-mile descent. Carry that speed through a 100-foot climb over the next mile, leading into yet another 5% descent into the Goodmanville Valley that can produce speeds of up to 50 miles per hour. Fight the road's undulations into Hart Park, then continue through rolling terrain for the next four miles, passing the Kern County Soccer Park and the California Living Museum.

Turn left past Bakersfield Fire Station No. 10 onto Lake Ming Road heading to the lake on a 7% grade. Once past the marina, the suffering begins. Climb 100 feet back to the fire station before turning right again onto Alfred Harrell Highway. Climb past the California Living Museum on a false flat, then gain speed as you pass the Kern County Soccer Park and enter the east side of Hart Park. Take a different route through the park using Lake Road, then exit Hart Park into a roller the size of an overpass that will dig into your legs and challenge your speed. Once on top, you will enjoy about 1½ miles of 30-mile-per-hour cruising as you pass again through Goodmanville. Then the climb is on. A 5% grade means about a half-mile of leg-searing pain awaits. The reward is the 100-foot drop over the next 1½ miles as you try to build speed into the final climb.

Follow the one-way road heading up the bluffs. Don't be caught off-guard by the severity and length of this finishing "bump," with more than 200 feet of climb in just ¾ of a mile. That last climb includes a section of 8% grade that will leave a lasting impression.

Finally at the top of China Grade, turn left onto Panorama Drive for about a half mile to where you began with more than 40 feet of elevation gain.

Hiking

Bakersfield has many possibilities for foot-powered fun. Check out some of these routes for yourself.

Mill Creek Linear Park This paved path runs along the Kern Island Canal downtown from 17th Street to Golden State Avenue. Along the way, you will pass a replica of a mill house that was located in the area, the Sister City gardens saluting Bakersfield's sister cities, the Bakersfield Museum of Art, and a federal courthouse next to a large lagoon.

Insiders' tips: Check out the changing exhibits inside the Bakersfield Museum of Art, 1930 R St., and a series of five abstract landscape scenes



Kern River Trail

MICHELLE BECK

inside the U.S. Courthouse, 510 19th St. Known collectively as *Water Paintings* and created by Lucinda Parker, the series underscores the importance of water in our climate. They are placed in areas that overlook the Mill Creek lagoon, creating a link to water.

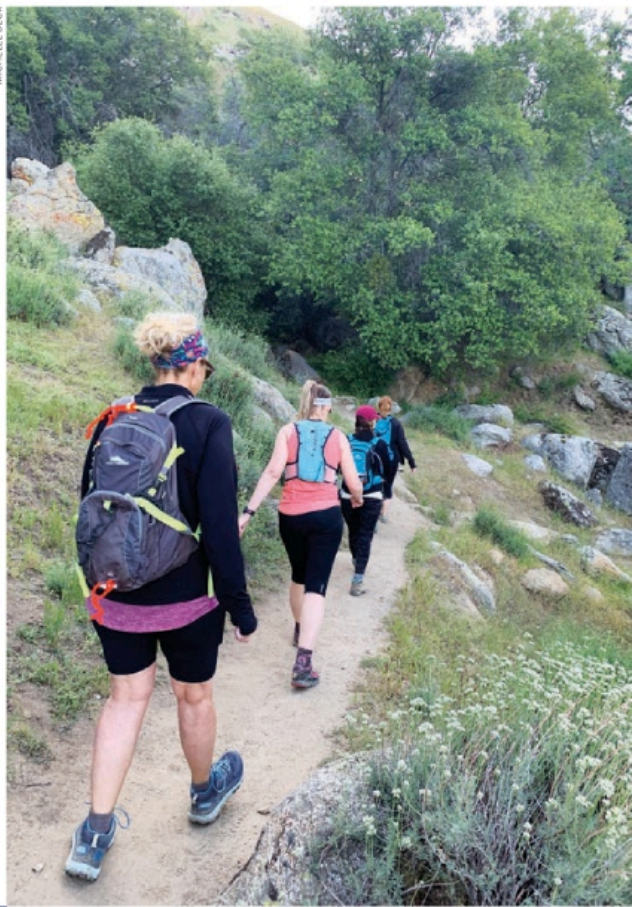
Panorama Bluffs Walking Trail This 1.8-mile paved path is ideal for a casual stroll or a more strenuous power walk. It meanders along the bluffs overlooking the Kern River and the Panorama Vista Preserve below, with the southern Sierra Nevada in the distance. The trail climbs about 90 feet along Panorama Drive from its western end near Westbluff Court to the eastern end at Haley Street. You can access part of the Panorama Vista Preserve by hiking down a trail from the bluffs. Park trailside along Panorama Drive, or in a small parking lot at Panorama Drive and River Boulevard.

Insider's tip: This is the best place to see Bakersfield's sunsets.

Panorama Vista Preserve Within this 936-acre private property natural habitat preserve is some of the most beautiful wooded land on the river with numerous species of plants and animals. It is open for limited low-impact public use and is used year-round by many local equestrians, walkers, bird-watchers, and bicyclists. You can reach the north side of the river via the parking lot on East Roberts Lane east of Manor Street. The south side can be accessed several ways: from the Kern River Parkway Trail on the east side of Manor Street, from China Grade Loop south of the Gordon's Ferry marker, or by walking down the bluffs along Panorama Drive.

Hart Park This 370-acre regional park is only minutes from downtown Bakersfield. Several formal and informal trails allow you to climb up the bluffs overlooking the park and the Kern River. Access these trails from the west end

MICHELLE BICK



Wind Wolves Preserve

GILBERT VEGA

of the park on the south side of Alfred Harrell Highway at Mirror Drive.

Wind Wolves Preserve Here you will find great birding, along with full moon and black-out hikes. On some weekends, the San Emigdio Express van or bus makes trips up and down San Emigdio Canyon, allowing visitors to hitch a ride along the way and see more of the beautiful scenery. There are several trails at Wind Wolves, which is open daily.

Insider's tip: Look for Native American rock art, some of the most noteworthy in North America.

Kern River Trail Experience the Kern River Canyon with this three-mile trail about an hour from downtown Bakersfield. Access it from Highway 178 and park at the bridge on the right about two miles past Kern Canyon Road, then cross the highway to reach the trailhead.

Pacific Crest Trail This legendary trail spans 2,650 miles and connects the Mexican border to the Canadian border. Access a portion of this epic hike from two points in Kern County: Walker Pass and Tehachapi.

Tehachapi Mountain Trail Experience an almost 2,000-foot elevation gain in a nearly

five-mile climb to the top of the peak. This trail is about an hour from downtown Bakersfield in Tehachapi Mountain Park south of Highline Road. Follow Water Canyon Road to County Park Road into the campground, then follow the campground road to the marked trailhead near the south end of the campground.

River Rafting

Looking for a blast of fun? **River's End Rafting** is the closest rafting location to downtown Bakersfield, only 20 minutes away on Highway 178. River's End Rafting specializes in a stretch of class II–III whitewater rapids that flows from the mouth of the Kern Canyon to Lake Ming. The Blaster is one of its Signature Series whitewater (not white-knuckle) rafting trips suitable for adventurers of all skills and abilities. Embark on your wet and wild excursion from the historic Rio Bravo Ranch, famous for its renowned olive oil production.

Insider's tip: Plan to sample olive oil or wine before or after your rafting excursion.

Boating

Check out nearby **Lake Ming**, **Buena Vista Aquatic Recreational Area**, and **Lake Isabella**. All are popular with boaters, anglers, and jet skiers.



California Living Museum (CALM)

Wildlife

California Living Museum (CALM) is the state's premier native zoo and garden. Many of the 250-plus animals at CALM are non-releasable and some cannot live in the wild due to physical disabilities.

Insider's tip: Visit the California Coast Room, a docent-led touch tank filled with native sea creatures and a jellyfish breeding exhibit.

Tule Elk State Natural Reserve, open daily, is the protected home of a small herd of tule (pronounced TOO-lee) elk. In 1895, only 28 tule elk were left in the world. Today, almost 4,000 of these elk can be found among more than 20 herds across the foothills and grasslands of California—including Wind Wolves Preserve where the reintroduced herd has grown to more than 200. Numerous birds of the San Joaquin Valley can also be sighted at the natural reserve.

Insider's tip: Rangers lead auto safaris of the reserve on the second and fourth Sundays of the month.

Kern National Wildlife Refuge sits on the southern margin of what was once the largest freshwater wetland complex in the western United States. It provides optimum wintering habitat for migratory birds with an emphasis on waterfowl and water birds. You also might see a variety of other wildlife. A year-round, six-mile auto route leads through some of the wetlands. ●



Rivers End Rafting and Adventure Company

explore.



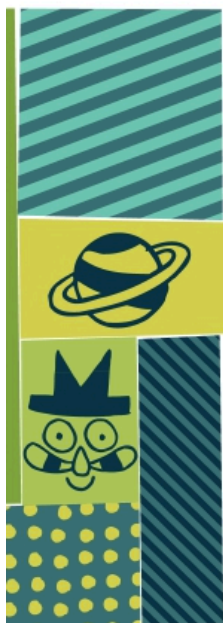


Fun FOR THE Farm

GET YOUR KIDS IN ON THE FUN!



Bakersfield's year-round sunny weather means there are things to see and do whenever you decide to visit.



AROUND THE STATION

Kids of all ages love trains, so why not take the train to Bakersfield? Many family fun activities are within walking distance of our downtown Amtrak station, and Amtrak offers discount fares for kids. You could make it a day trip, but with so many family-friendly things nearby, consider spending the night. There are hotels within walking distance of the Amtrak station, plus many other Bakersfield hotels offer free shuttle service.

Once your train arrives, you are just steps away from fun activities for all ages. Ice skate at Valley Children's Ice Center, catch a movie at 16-screen Maya Cinemas just next door, visit McMurtrey Aquatic Center next to the Ice Center and Maya Cinemas, and expand the mind with a visit to Kern Veterans Memorial and adjacent Liberty Tree on the north side of the Amtrak parking lot. Then walk across "S" Street to the Beale Memorial Library, where a variety of children's offerings await.

BAKERSFIELD MUSEUM TRAIL

Explore a turn-of-the-20th-century 16-acre village, the largest collection of Sharktooth Hill Miocene fossils in the world, scores of endangered animals and plants, and a broad spectrum of visual arts experiences, all along the Bakersfield Museum Trail.

This 15-mile driving route connects four unique and family-friendly Bakersfield attractions—Bakersfield Museum of Art, Buena

Vista Museum of Natural History and Science, California Living Museum, and Kern County Museum. Along the way, discover some historic sites and points of interest, plus statues of both the first European visitor to our area and a giant Native American warrior.

Your Bakersfield Museum Trail Brochure gets you special savings at each museum. The more you visit, the more you save. Pick up your free Bakersfield Museum Trail brochure at any of the museums or at Visit Bakersfield (515 Truxtun Ave.). You also can download it online at VisitBakersfield.com/MuseumTrail.

BUENA VISTA MUSEUM OF NATURAL HISTORY AND SCIENCE

A unique museum offering fun and educational experiences for all ages, the Buena Vista Museum of Natural History and Science is home to a world-class collection of one-of-a-kind Miocene fossils (14–16 million years old) found in the foothills of Bakersfield. Additional exhibits include a large collection of African, Asian, and North American animal mounts; dinosaur replicas and fossils; and Native American lifeways, a life-size interpretive family dwelling area with artifacts, paintings, and baskets. Also explore a geology section with gems, minerals, petrified woods, fluorescent rocks, and the Oh! Zone and Explore-it Zone interactive hands-on areas that are designed for children but have something for all ages. **2018 Chester Ave.**

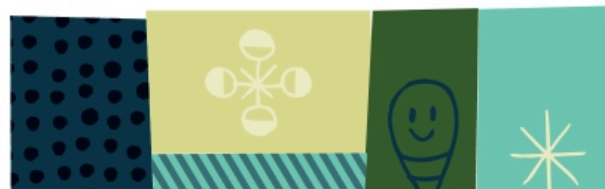
RIGHT
Aboard the Amtrak
San Joaquins

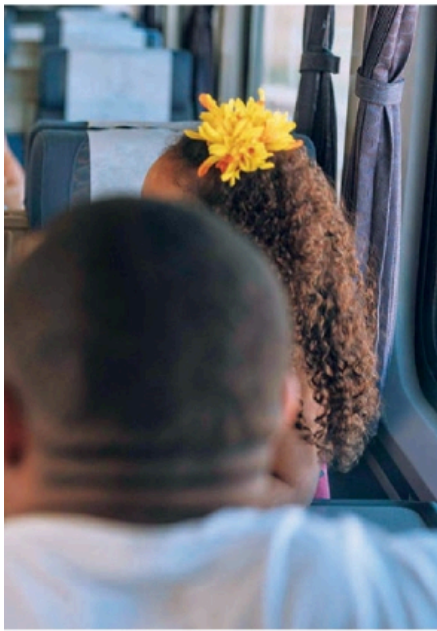
FAR RIGHT
Flight Fit N Fun

BELOW RIGHT
Murray Family
Farms



LEFT
California Living
Museum (CALM)





CALIFORNIA LIVING MUSEUM (CALM)

This is California's premier native zoo and garden. Consistently voted "Best Family Attraction" in the *Bakersfield Californian's* Reader's Poll, its spectacular Holiday Lights—with more than three million lights—was also voted "Best Annual Event." Most of the 250+ animals at CALM are non-releasable. Some cannot live in the wild due to physical disabilities and others have become dependent on humans due to being orphaned in the wild. Visit the award-winning Cats of California exhibit housing mountain lions and bobcats, and the desert bighorn sheep exhibit, a cooperative breeding program aimed at increasing this endangered species. Be sure to visit the California Coast Room featuring moon jellies and an intertidal touch tank, as well as the endangered California Condors who are CALM's most recent residents. **10500 Alfred Harrell Hwy.**

KERN COUNTY MUSEUM

Take a walk through history at the Kern County Museum. Thousands of historical and cultural artifacts are displayed in more than 56 historic buildings on 16 beautifully landscaped acres. Your self-guided tour includes treasures such as a one-room school, a general store, a jail, an oil derrick, seven historic homes, a world-class oil museum, and a children's museum. From California's Gold Rush through its settlement and development to the crucial oil industry of today, the state's rich heritage can be experienced in one convenient and central location at the Kern County Museum. **3801 Chester Ave.**

BAKERSFIELD MUSEUM OF ART

One of Bakersfield's finest cultural institutions, the Bakersfield Museum of Art is dedicated to engaging, inspiring, and building community through the arts. In its 60-year history, it has provided outstanding exhibits and offered unique educational opportunities in the visual arts to Bakersfield and its surrounding communities. Enjoy world-renowned exhibitions or relax in the beautiful sculpture garden at Bakersfield's only museum accredited by the American Alliance of Museums. **1930 R St.**



MORE FAMILY FUN IDEAS

- **River's End Rafting and Adventure Company** is less than 20 minutes from downtown. It's the closest river rafting company to Los Angeles.
- **The BLVD** features bowling, a ropes course, laser tag, karaoke, and an arcade. Nearby is the indoor trampoline park **Flight Fit N Fun**.
- View the stars at the **William M. Thomas Planetarium** at Bakersfield College in a 36-foot dome, the largest in the Central Valley.
- At **Murray Family Farms**, visit the petting zoo and bounce pillow, get a hayride tour of a working farm, and hand-pick fruits and vegetables in season.
- Pick up lots of dates, citrus, nuts, and dried fruit at **California Fruit Depot**, billed as the state's smallest volume packing house. Try the date milkshakes!
- Go roller skating at **Skateland, Rollerama, and Rollerama West**.
- Gain elevation at the rock climbing wall at **Action Sports**.
- Enjoy more than 100 games, rides, and attractions at **John's Incredible Pizza**.

However you arrive, Bakersfield's family-friendly activities are ready for you. Stop by Visit Bakersfield at 515 Truxtun Ave., next to the downtown Amtrak station, for free maps and personal assistance for some kid-friendly local attractions. ●

For even more family-fun ideas, check out our events calendar at VisitBakersfield.com » Events to see what is happening during your visit.





Racing Capital OF CALIFORNIA

NOTHING PUMPS
YOUR ADRENALINE
QUITE LIKE THE
loud vroom
FROM THE TRACK.

ABOVE
Auto Club Famoso Raceway
March Meet

RIGHT
Auto Club Famoso Raceway



AUTO RACING is arguably the most popular spectator sport in Bakersfield. Events like March Meet, California Hot Rod Reunion, and Winter Showdown are just a few of the draws held at any of our four racetracks throughout the year. Having so many tracks is why Bakersfield is the Racing Capital of California.

Auto Club Famoso Raceway hosted the first March Meet in 1959 and it helped establish the fledgling National Hot Rod Association's (NHRA) legitimacy. Today, the Famoso Raceway, located about 30 miles north of Bakersfield,

still hosts the March Meet, drawing more than 30,000 spectators during its annual three-day run. In October, the track hosts the wildly popular California Hot Rod Reunion. For lovers of fast vintage cars and drag racing, these two mega-events draw fans from around the world, and a visit to the strip is a must.

Kern County Raceway Park has brought NASCAR back to Bakersfield! With a half-mile paved oval and a

quarter-mile oval inside, this state-of-the-art facility is the newest addition to the Bakersfield auto racing scene. Its 5,000 seats and 21 VIP suites provide outstanding views and its location adjacent to Interstate 5 means easy access for visitors from throughout California. The annual Winter Showdown is a 300-lap race and is the richest purse for any short-track race in the country. It has been nationally televised each year and has drawn the top Super Late Model teams from around the nation.

Insider's tip: An elite group of drivers hold the title of Winter Showdown Champion: two-time winner Bubba Pollard (2015, 2016), four-time SPEARS Southwest Tour Series champion Derek Thorn (2017), NASCAR Cup Champion Kyle Busch (2018), and four-time Mid-West Tour champion Ty Majeski (2019).

Bakersfield Speedway is known as the West's fastest 1/3-mile, high-banked clay oval.



Buttonwillow Raceway

LES SHAPS



Metro BMX Bakersfield

MARTY AND SWEET



Auto Club Famoso Raceway



Buttonwillow Raceway

LES SHAPS



Kern County Raceway Park

This is home to races each weekend from March to October. The track draws fans and racers from across the Western United States for IMCA modified, hobby stocks, American stocks, and mini stocks races. The track is a popular stop for racers between Las Vegas and many California racetracks.

Buttonwillow Raceway is the place to be for open wheel race fans. Located about 30 miles northwest of Bakersfield, the road course track is owned and operated by the California Sports Car Club. Buttonwillow is the flagship track of Cal Club and is also the location of the Club's administrative offices. Racing events are held throughout the year.

SPEED WITHOUT THE MOTOR

Metro BMX Bakersfield is where you can find the thrill, excitement, and adrenaline rush of BMX racing and freestyle. Get ready for big jumps, steep backsides, deep turns, and downhill sections to gain massive speeds. Metro BMX welcomes thousands of visitors at the many competitions it hosts throughout the year, including the Golden State Nationals. ●

BAKERSFIELD

CALIFORNIA AREA MAP

Distance To

Sequoia National Park.....	97 mi. (156 km)
Los Angeles	112 mi. (180 km)
Yosemite National Park....	203 mi. (326 km)
Death Valley.....	220 mi. (354 km)
San Diego	232 mi. (373 km)
San Francisco	284 mi. (457 km)
Las Vegas	286 mi. (460 km)
Sacramento	286 mi. (460 km)

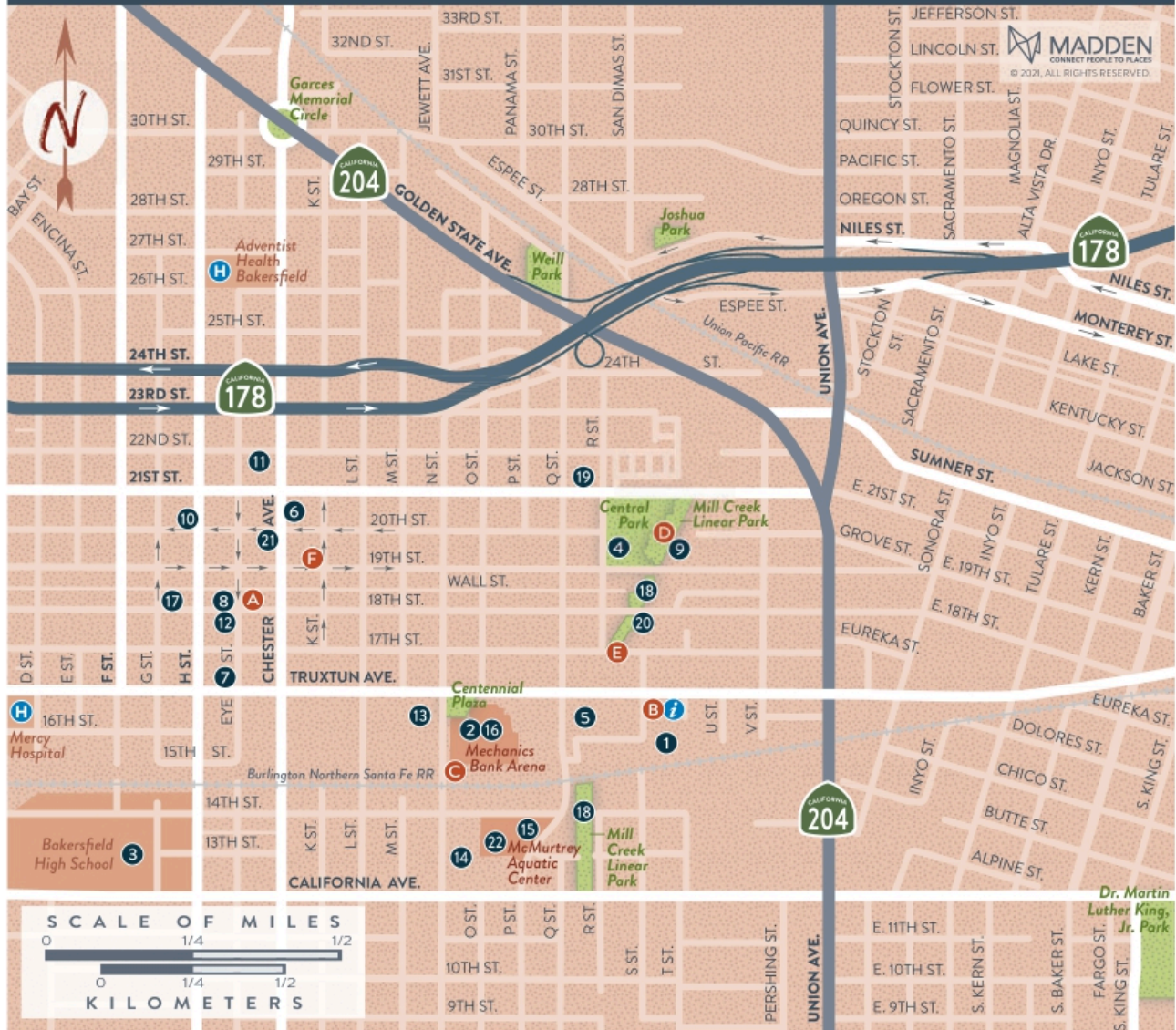
Points of Interest

- 1 Auto Club Famoso Raceway
- 2 Bakersfield College
- 3 Bakersfield Municipal Airport
- 4 Bakersfield Speedway
- 5 Buck Owens' Crystal Palace
- 6 California Fruit Depot
- 7 California Living Museum (Bakersfield Zoo)
- 8 California State University, Bakersfield
- 9 Camelot Park
- 10 Dignity Health Amphitheatre
- 11 Flight Fit N Fun
- 12 Hart Park
- 13 Kaiser Permanente Sports Village
- 14 Kern County Fairgrounds
- 15 Kern County Museum
- 16 Kern County Raceway Park
- 17 Kern County Soccer Park
- 18 Kern River Parkway Trail (Paved Bike Path)
- 19 Lake Ming
- 20 Meadows Field Airport (BFL)
- 21 Mesa Marin Sports Complex
- 22 Murray Family Farms
- 23 Panorama Vista Preserve
- 24 River's End Rafting
- 25 Sam Lynn Ballpark
- 26 The BLVD
- 27 Valley Plaza Mall
- 28 Wind Wolves Preserve
- i Visit Bakersfield (Visitor Center)



Downtown

BAKERSFIELD



Points of Interest

- | | | |
|---|--|---|
| 1 Amtrak Bakersfield Station | 10 Fox Theater | 17 Merle Haggard Post Office |
| 2 Bakersfield Condors Hockey | 11 GET Bus Downtown Transit Center | 18 Mill Creek Linear Park |
| 3 Bakersfield High School | 12 Greater Bakersfield Chamber | 19 Nuestro Mexico (Best Tacos In California according to Thrillist.com) |
| 4 Bakersfield Museum of Art | 13 Kern County Administrative Center | 20 Sister City Gardens |
| 5 Beale Memorial Library | 14 Maya Cinemas | 21 Stars Theatre Restaurant |
| 6 Buena Vista Museum of Natural History & Science | 15 McMurtrey Aquatic Center | 22 Valley Children's Ice Center |
| 7 City Hall | 16 Mechanics Bank Arena, Theater and Convention Center | i Visit Bakersfield |
| 8 Downtown Parking Garage | | H Hospital |
| 9 Federal Courthouse | | |

Selfie Spots

- A Guthrie's Alley Cat
- B Kern Veterans Memorial
- C Korn Row
- D Mill Creek Covered Bridge
- E Mill House
- F Woolworth's (Last Remaining Lunch Counter in the U.S.)



Driving the Streets of Bakersfield

EXPLORE THE STREETS OF BAKERSFIELD WITH THESE DRIVING TOURS.

BAKERSFIELD DRIVING TOUR

This 30-mile tour takes you to Kern County Museum, then past the site where the first permanent settler of Bakersfield lived. Afterward, you climb along the bluffs overlooking one of the country's largest oil fields before you descend those bluffs through the Sierra foothills to one of the area's oldest, and largest, parks. Caution: watch for peacocks! Next you will discover CALM—the California Living Museum—then loop back downtown to the Bakersfield Museum of Art and the Fox Theater, ending at Buck Owens' Crystal Palace.

THE BACK ROADS TO THE TEHACHAPI LOOP DRIVING TOUR

The Tehachapi Loop is an engineering marvel, attracting train fans from all over the world. But half the fun is watching these long trains climb from the valley floor up the grade of the Sierra Nevada to the Loop (or back down). It's a fascinating and historical side trip into the Sierra foothills through Bena, Caliente, and Bealville to see the trains snaking through narrow valleys and several tunnels. On this driving tour to and from Bakersfield, there are historical sites, one of the newest national monuments in the National Park Service, and places to sample outstanding local produce.



Peacocks in Hart Park



Historic Fox Theater



Kern Veterans Memorial

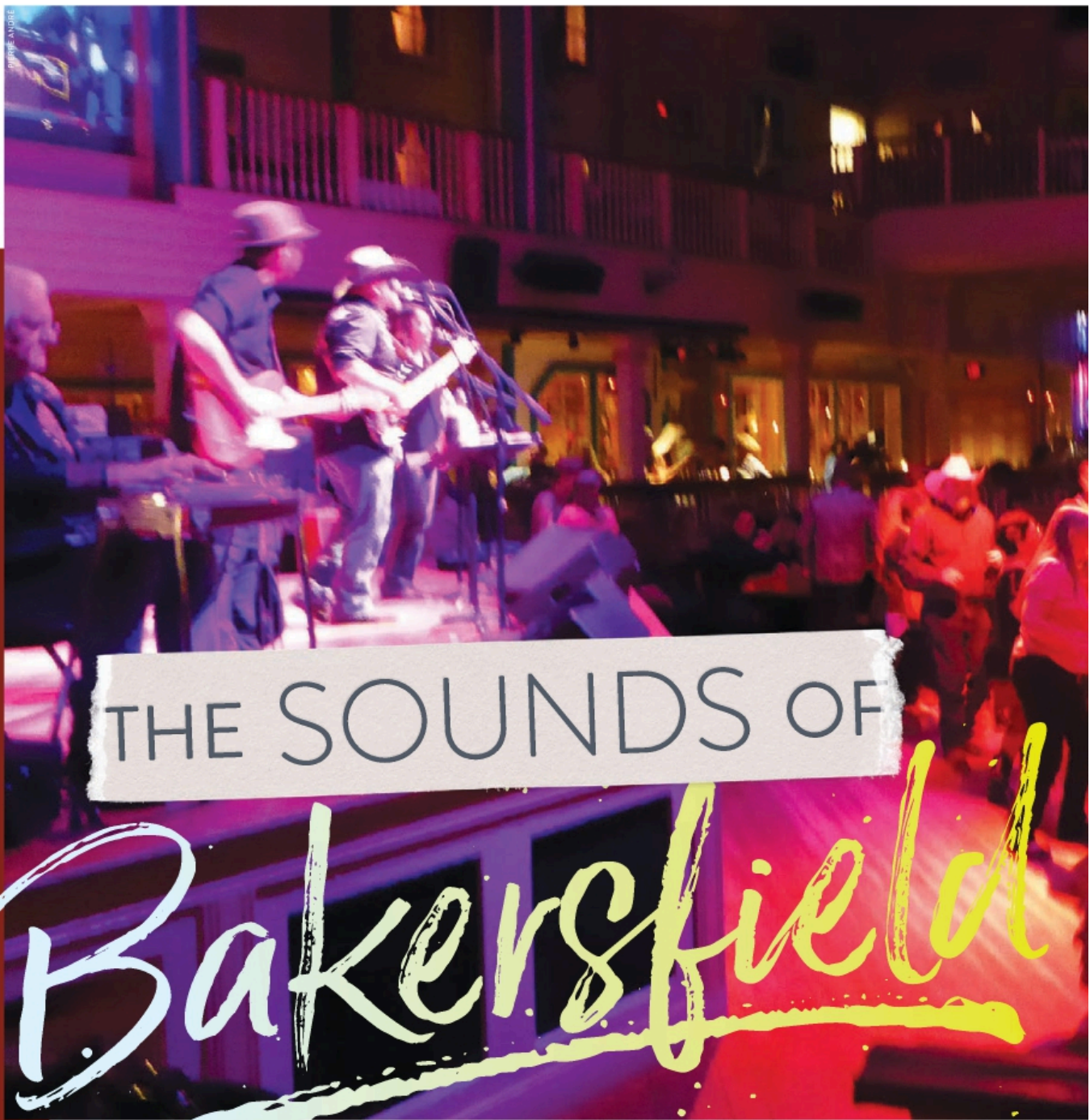
UNIQUE CHURCH BUILDINGS

Bakersfield is a city of churches. Although most of our grand church buildings were destroyed in the 1952 earthquake, several unique holy structures can still be found on this self-guided tour. These include the former First Baptist Church, now on the National Register of Historic Places, and the only religious structure of its era to survive the earthquake; a building that used to house Let Sing Gong temple, the last remnant of one of Bakersfield's two Chinatowns; and San Clemente Mission, a church built in the California mission style with 15 leaded-glass panels in the main sanctuary.

VETERANS MEMORIALS

Visit any or all of the eight veterans memorials on this self-guided tour, including the Kern Veterans Memorial with its Wall of Honor listing the names of all Kern County residents killed in battle; and Bakersfield National Cemetery, the only national cemetery in California designated a National Shrine—and one of only 17 out of 131 national cemeteries with this prestigious recognition. ●

For more information and routes, point your browser to VisitBakersfield.com » Visitors » Tours.



THE SOUNDS OF

Bakersfield

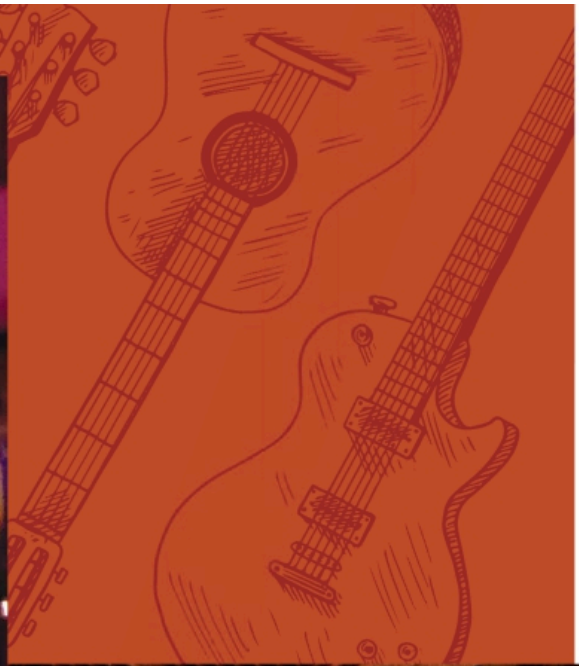
THE CITY THAT GAVE 
ITS NAME TO THE FAMOUS

Bakersfield Sound

IS A CITY OF MANY TYPES OF MUSIC.



Buck Owens' Crystal Palace



PIERRE ANDRE

"The aesthetic known as the Bakersfield Sound transformed country music, its hard edge a stark contrast to Nashville's stringed orchestras. It turned displaced Okies like Buck Owens and Merle Haggard into household names, and in the process created a widely felt influence on style, instrumentation, and attitude in American music."

— *The Bakersfield Sound: How a Generation of Displaced Okies Revolutionized American Music* by Robert E. Price.



ABOVE
Buck Owens'
1972 Pontiac
Convertible at the
Crystal Palace

LEFT
Buck Owens and
Merle Haggard
poster at the
Bakersfield Music
Hall of Fame

To understand how significant the Bakersfield Sound is, ask yourself: how many other cities have a type of music named after them?

Few remnants of the Bakersfield Sound remain, but the most visible is **Buck Owens' Crystal Palace**, a music hall and restaurant built by Owens in 1996, located on (of course) Buck Owens Boulevard.

Insider's tip: Check out Buck's Pontiac convertible mounted on the wall behind the bar. Legend has it that he won it from Elvis in a poker game.

Insider's tip: Then take your picture with one (or more) of the bronze statues of Garth Brooks, Johnny Cash, Merle Haggard, George Jones, Willie Nelson, Buck Owens, Elvis Presley, George Strait, Hank Williams Jr., and Bob Wills.

FIND NOTES OF THE BAKERSFIELD SOUND

- **Buck Owens' Crystal Palace** 2800 Buck Owens Blvd.
- **Kern County Museum** 3801 Chester Ave.
- **Merle Haggard's restored childhood home** Kern County Museum, 3801 Chester Ave.



Dignity Health Amphitheatre

BAKERSFIELD RECREATION & PARKS

Kornucopia

- The plaque honoring Bakersfield's Korn outside **Mechanics Bank Arena** 1001 Truxtun Ave.
- A signed guitar is inside Mechanics Bank Arena's administration office. Ask the office staff for a look.
- **Korn Row street sign**, behind Mechanics Bank Arena on the east side of N Street, immediately north of the railroad tracks.
- **Jerry's Pizza**, where Korn used to play 1817 Chester Ave.

What makes Bakersfield a quintessential music destination is that it's home to more than just the one Bakersfield Sound. What other city can claim to be the origin point of a country music and metal subgenre?

Pioneers in bringing nu metal into the mainstream, fans of the second sound of Bakersfield regularly visit to pay homage to hometown band of Korn. With more than 35 million records sold, Korn has a dedicated following and many want to see where it all began.



FACTOR METAL

JOAQUIN VALENTIN BRYO



Merle Haggard's restored childhood home

What other city can claim to be the *origin point* of a country music and metal subgenre?

While those two genres may be the biggest and most well known to come of out Bakersfield, they don't come close to encompassing all the music playing on these stages.

Looking for a place to hear live music? Consider a variety of venues around Bakersfield. Perhaps the **Mechanics Bank Arena** or the **Historic Fox Theater**. Or smaller places like **Ethel's Old Corral Cafe**, the basement at **Sandrini's Public House**, the **Bakersfield Music Hall of Fame** or **World Records**. You



MENTO BURU

CSUB Amphitheater

will also find music drifting from numerous outdoor stages, from city parks to shopping centers. Local favorite Mento Buru gigs regularly with its seven-piece band that has been blending ska, salsa, jazz, and a few other ingredients since 1992.

Bakersfield is also a jazz city. The **Bakersfield Jazz Workshop** has grown from its founding in 2006 to a weekly event at Temblor Brewing where the motto is "Hear it! Learn it! Play it!" These free sessions (donations welcome) begin with a jazz improvisation class, followed by a featured jazz performer, and end with an open jazz jam for intermediate, advanced, and professional instrumentalists and vocalists. Also check out **Bakersfield Jazz Festival**, held for more than 30 years on the Cal State Bakersfield campus.

The **Bakersfield Symphony Orchestra** has provided a strong musical foundation to Bakersfield since 1932. Today it provides exciting performances, regularly performing at Mechanics Bank Theater, including its Young People's Concert Series. The BSO Dine program partners with top local restaurants to offer concertgoers savings when showing their concert tickets at participating eateries on the date of the performance.

The Bakersfield Sound may be the backbone of this city, but its heartbeat is filled with a harmonious blend of talented musicians expressing themselves across any and all genres. And that's what makes all the Bakersfield Sounds special. ●



Bakersfield Music Hall of Fame



BELLY UP TO THE BAR AND SAMPLE THE LOCAL BREWS ON TAP.



Bakersfield has seen a brewing renaissance over the last few years. Not only is there a large variety of locally brewed beers, but their quality sets them apart from the national brands.

Crusader Brewing's tap room captures the essence of pub culture and feel while transporting you to the Biergartens of Germany in their event spaces. A large selection of beers is available, brewed using the highest quality malt and hops sourced from around the world.

Dionysus Brewing was born of the love of beer-making itself. The brewery was mentioned in the *Los Angeles Times* as one of "several road-trip-worthy destinations producing world-class suds" and made it on the "Best of" listing at the Beer Summit 2019. Dionysus—also the name of the Greek god of fertility and wine—boasts 16 beers with new offerings every



Take a tour on the Bakersfield Brewery Trail today! Check out the Bakersfield Brewery Trail Map, available at VisitBakersfield.com/BreweryTrail.

2nd Phase Brewing



season. While there is no kitchen, food trucks on some evenings keep patrons well fed and happy.

Great Change Brewing offers an experience born from family and focused on community since 2018. They offer traditional West Coast-style beers that range from blondes, pale ales, IPAs, double IPAs, stouts, and more. Grab a drink and enjoy their spacious outdoor patio.

Lengthwise Brewing has been supplying Bakersfield with artfully crafted beer since the mid-90s. Take the whole family for a meal, or join friends to watch the game on multiple screens at each of its three locations.

Insider's tip: Lengthwise Brewing roasts its own coffee beans and will package (and grind) them for you to take home.



Pub grub-style food is served in a fun and open atmosphere.



2nd Phase Brewing is located in the original 1941 Sam Woo Laundry building. The space boasts 4,200 square feet of beautiful high ceilings and holds a six-barrel brewing system. Enjoy a variety of beers brewed by the owner himself based on recipes he has developed throughout the years. Also, be on the lookout because 2nd Phase Brewing dedicates one barrel to an experimental series of beers on a regular rotation.

Temblor Brewing Company has eight full-time beers plus an increasing number of seasonal brews. Pub grub-style food is served in a fun and open atmosphere. During your visit, you are encouraged to play a round of cornhole, giant Jenga, or any number of board games available. In addition to craft beer and food, Temblor is an active venue for live music, comedy, line dancing, and more.

Insider's tip: See bricks salvaged and reclaimed from Bakersfield's original brewery (circa 1912) in a display on Temblor's east wall.

Bakersfield Beer Company offers a constantly rotating selection of beers on tap, and in bottles and cans from microbreweries throughout California.

Cheers! ●

Califia Farms produces plant-based products including creamers, cold brew coffees, yogurt, plant milks, and juices.



TASTES TO Take Home

From candies and pastries to breads and olive oils, take a piece of Bakersfield home with you.

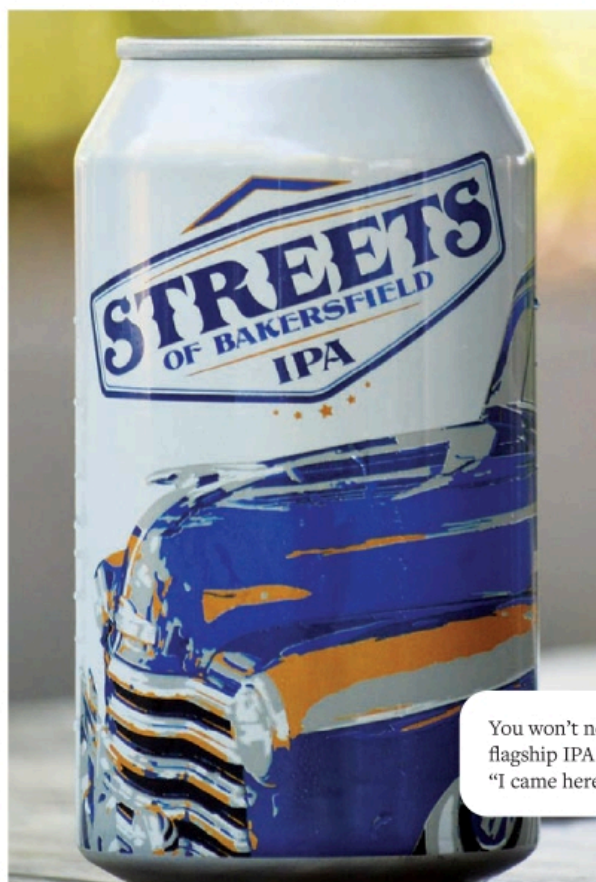
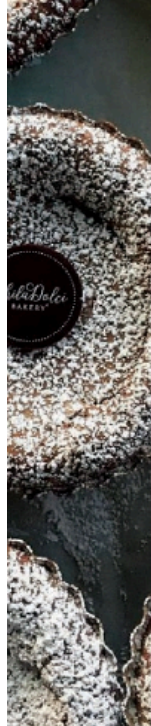
Looking for unique Bakersfield products for yourself or to give as gifts? Here are some of our favorites from Col. Baker's field.



Pyrenees' French bread is Bakersfield's bread. The sourdough bread is still baked in brick ovens using the same Old World techniques and recipes since 1944.

GhilaDolci Bakery makes everything from classic all-American desserts to Italian-inspired pastries, all from scratch.

Dewar's chews are Bakersfield's favorite candy. Made the same way for more than 100 years, they have been featured in numerous articles and on Food Network.



You won't need to know the lyrics to enjoy **Streets of Bakersfield Beer**, the flagship IPA from Temblor Brewing Company. But feel free to sing if you do: "I came here looking for somethin', I couldn't find anywhere else."

Rio Bravo Ranch's award-winning olive oil earned gold and silver medals from the California Olive Oil Council and two gold medals at the Central Coast Olive Oil 2017 competition. Rio Bravo Ranch also makes wine from its vineyard including an assorted selection of Zinfandels.



Paleta Company offers frozen sweets with vegan options available. Flavors include homemade mango sorbet, horchata ice cream, coconut milk Malibu, cucumber chili, mango chili, and more.



Aunt Mae's Toffee has many unique toffee flavors including Circus Animal toffee, toffee Rice Krispie Treats, churro Oreo toffee, coconut Golden Oreo, and even a Flamin' Cheeto toffee! If you can't make up your mind, go for Aunt Mae's variety pack.



Speaking of sauces, Luigi's Deli sells its famous homemade pasta sauces—marinara, meat sauces, and white sauces. Also pick up their top-seller, custom Luigi's seasoning.



Brother Ray's Salsa and Seasoning makes fresh seasonings, sauces, and salsas like spicy Devil's Den, mild garlic salsa, and medium ranchera salsa, plus some products labeled o8'ers, a nod to our friends in the 93308 ZIP code.

How many have you tried?



My Husband's Nuts specializes in seasoned and candied California almonds, direct from the farmer's wife.

La Rosa Fruit Bars and Ice Cream serves up refreshing treats that you will only find in Bakersfield. Handmade daily with fresh natural fruits, they come in 26 assorted flavors.



Voktail is a local-flavored craft vodka that was dreamed up in Bakersfield and crafted with California flavors. This drink comes in different flavors including blood orange, lavender, and spicy jalapeño.

FIND THESE LOCAL PRODUCTS ONLINE

My Husband's Nuts myhusbandsnuts.com
 Califia Farms califiafarms.com
 Dewar's Ice Cream and Fine Candies dewarscandy.com
 La Rosa Fruit Bars and Ice Cream larosafruitbars.com
 Paleta Company facebook.com/paletacompany
 Aunt Mae's Toffee auntmaessweets.com
 Smith's Bakeries smithsbakeries.com
 GhilaDolci Bakery ghiladolcibakery.com
 Streets of Bakersfield Beer temblorbrewing.com
 Voktail voktail.com
 Brother Ray's Salsa and Seasoning broraysalsa.com
 Luigi's Deli shopluigis.com
 Pyrenees Bakery pyreneesfrenchbakery.com
 Rio Bravo Ranch riobravoranch.com
 Pepper Delight pepperdelight.net

Show off your Bakersfield pride wherever you are with official T-shirts, caps, coffee mugs, and more at BakersfieldSwag.com!



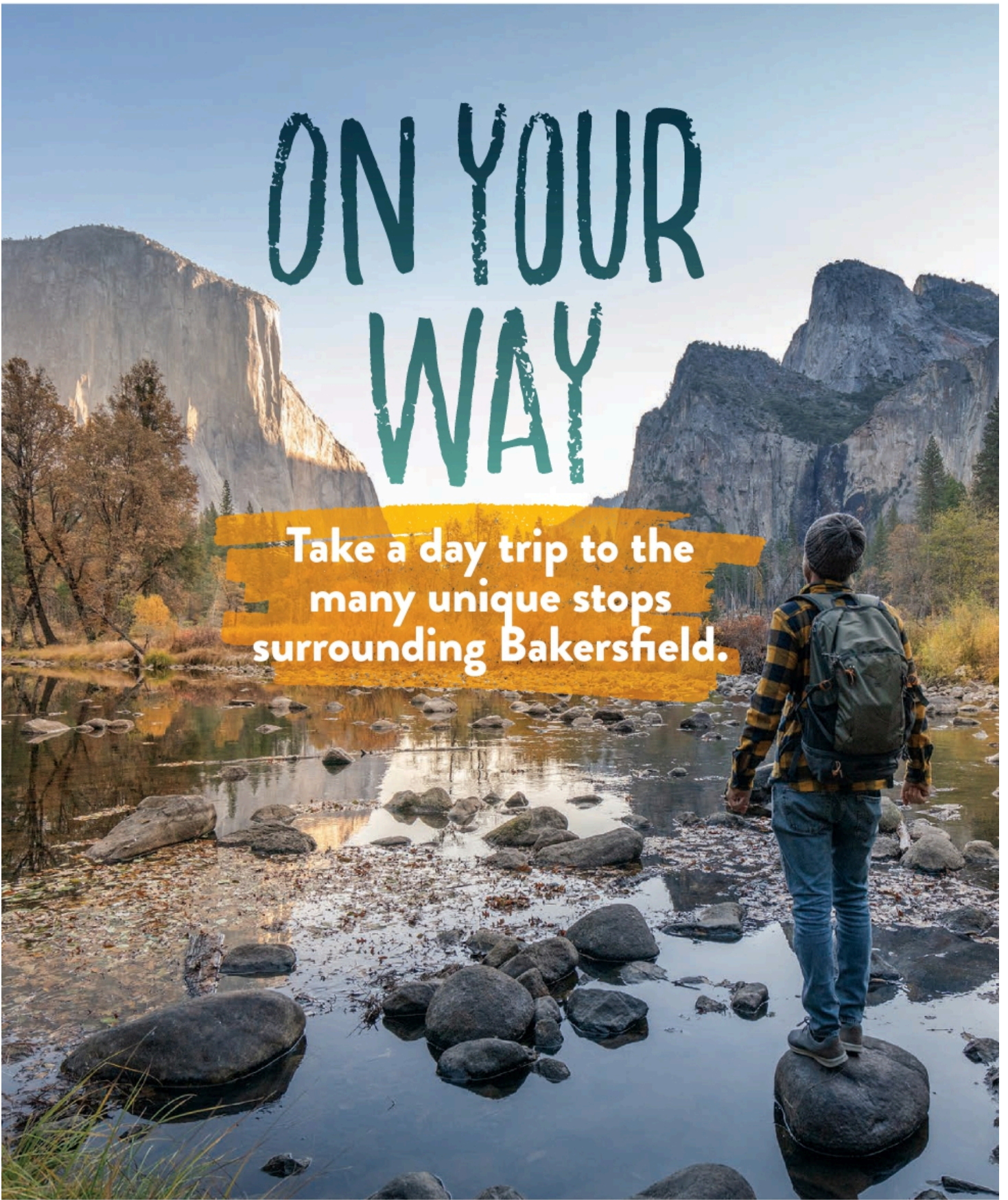
Pepper Delight creates flavors like red pepper, hatch pepper, blackberry lavender, blueberry rosemary, peach mango, pineapple, raspberry, strawberry, pomegranate, and jalapeño relish for its artisan pepper jams and jellies.

Since 1945, **Smith's Bakeries** have been the Bakers of Bakersfield. Everyone in Bakersfield knows Smith's bright yellow happy face cookies, along with many other favorites.



ON YOUR WAY

Take a day trip to the many unique stops surrounding Bakersfield.





Yosemite National Park



Crystal Cave in Sequoia National Park

Bakersfield is in the middle of lots of fun and interesting places. Make sure you stop by some of them as you head to, or leave from, California's ninth largest city. Many also make good day trips from Bakersfield.

TO THE North

Yosemite National Park 203 MI/327 KM This is one of the most famous national parks, known for iconic images such as Half Dome and Bridalveil Falls.

Insider's tip: Glacier Point provides outstanding views of Yosemite Valley down below, Half Dome straight ahead, and other parts of this park.

Insider's tip: Make sure your preferred route into or out of Yosemite is open when you plan to travel. Tioga Pass Road provides access to the park from the east, but is closed much of the year due to its high elevation.

Sequoia & Kings Canyon National Parks 97 MI/156 KM These two side-by-side parks are known as the Land of Giants for their gigantic trees. Kings Canyon, originally called General Grant National Park, is home to the General Grant Tree—the nation's Christmas Tree. The Grant Tree is also a National Shrine, dedicated as a memorial to those who died in war, and is the only living object to carry such a designation. Sequoia is home to the Giant Forest, where you will

find five of the 10 largest trees in the world. People flock to see the General Sherman Tree, the largest tree by volume in the world, which is easily accessible to visitors.

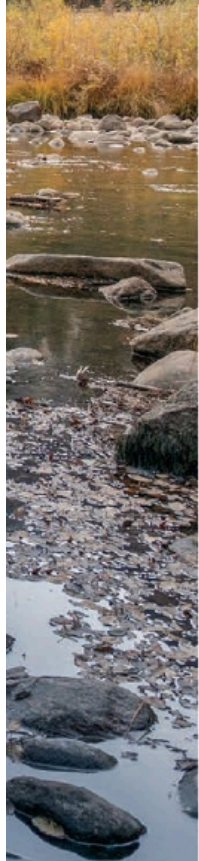
Insider's tip: Make time to climb Moro Rock, drive through Tunnel Log, and take a guided tour of Crystal Cave (open seasonally), a notable marble cavern that is often overlooked by visitors.

Insider's tip: Sequoia National Park is not the same as Sequoia National Forest, and not the same as Giant Sequoia National Monument. Make sure you know which one you are going to.

Trail of 100 Giants 90 MI/145 KM If you want to see giant sequoias closer to Bakersfield, consider a two-hour drive to this grove in Giant Sequoia National Monument. Enjoy an easy, paved, and wheelchair-accessible path through one of the premier groves of giant sequoias. Located on the Western Divide Highway (M107), facilities include a paved parking lot, restrooms, a picnic area, and a nearby campground, but access to this location is closed during the winter months.

Insider's tip: Look for the two large sequoia trees that fell on September 30, 2011. These two trees had grown together at the base and remain on the ground today, lying in silence with a tremendous root of more than 17 feet across, exposed. Impact fractures allow the public to view the inside of this giant.

Insider's tip: The \$10 parking fee is cash only.



Trail of 100 Giants

Colonel Allensworth State Historic Park 30 MI/48 KM

In August 1908, Colonel Allen Allensworth and four other settlers established a town founded, financed, and governed by African-Americans. In 1974, California State Parks purchased land within the historical town site of Allensworth and it became Colonel Allensworth State Historic Park. Today a collection of lovingly restored and reconstructed early 20th-century buildings—including the Colonel's house, historic schoolhouse, Baptist church, and library—once again dots this flat farm country, giving new life to the dreams of these visionary pioneers.

Insider's tip: Amtrak San Joaquins occasionally stops at Allensworth for celebratory events, such as Juneteenth.



TO THE East

Death Valley National Park 220 MI/354 KM This is the nation's hottest, driest, and lowest national park; Badwater Basin inside the park, at 282 feet below sea level, is the lowest point on the North American continent. Death Valley also is the nation's largest national park outside of Alaska. It is a land of extremes, and those extremes make this park very popular with visitors. (Remember, there is a reason it is called "Death Valley.") Not only is Death Valley rich in beauty and pioneer history, it was known as a prosperous mining mecca for many decades. Today it provides camping, hiking, bicycling, and nature exploring opportunities.

Insider's tip: Death Valley National Park provides outstanding chances to see the stars. The park is designated as the largest Dark Sky National Park in the country by the International Dark Sky Association, and is a Gold Tier Dark Sky Park, the highest level awarded.

Randsburg 96 MI/155 KM This living ghost town is a fun stop on your way between Death Valley or Las Vegas and Bakersfield. The main street's old Western storefronts

resemble a Hollywood back lot, providing numerous unique and colorful photo opportunities from California's old mining days. Inside the General Store is a historic soda machine built in 1904 that still works. Across the street is the White House Saloon with a stamped-tin ceiling and a very long bar. A few steps away are the Rand Desert Museum, some antique shops, and the old jail.

Insider's tip: Many of Randsburg's businesses are only open on weekends. On certain weekends, the small town is very popular with off-road vehicles and motorcyclists.

Red Rock Canyon State Park 77 MI/124 KM The spectacular rock formations of various colors and shapes that rise from the desert have long been used by film crews as settings for westerns or science-fiction films. Here you will find walking and hiking trails, as well as camping facilities.

Insider's tip: If you do not have time for a long visit, many of Red Rock Canyon's dramatic rock formations are easily viewed from Highway 14.

Tehachapi Loop 32 MI/52 KM This engineering marvel attracts train fans from all over the world. It is one of the seven wonders of the railroad world, where you can watch long trains pass over themselves as they go around the spiral loop. The railroad line was cut through solid and decomposed granite by up to 3,000 laborers from Guangzhou, China, between 1874 and 1876. They used picks, shovels, horse-drawn carts, and blasting powder. This was part of the final link of the first railroad line connecting San Francisco to Los Angeles. This single track line, essentially unchanged, is still in constant use today with an average of

36 freight trains each day. This attests to the superior job of both engineering and construction done by the two civil engineers and the Chinese laborers.

Insider's tip: There are no restrooms or food offerings at the Loop. Watch the trains from the marker along Woodford-Tehachapi Road. Visit Bakersfield's *Back Roads to the Tehachapi Loop Driving Tour* provides suggestions on where you may see snow, wildflowers, or grazing cattle to and from your visit to the Loop.

Cesar E. Chavez National Monument 30 MI/48 KM One of the nation's newest national monuments, this one is dedicated to the life of farm worker labor organizer Cesar Chavez. It is set in a scenic small valley in a complex built in the early 20th century as a sanatorium for tuberculosis patients.

Insider's tip: Consider combining a visit here with a visit to the Tehachapi Loop, less than three miles away.

TO THE South

Ft. Tejon State Historic Park 40 MI/64 KM In 1859, the U.S. Army experimented with using camels in the desert and many were trained and stationed here. Today, this small five-acre park features remnants of the old fort, including old adobes, barracks, and 400-year-old oak trees, as well as picnic tables in shady areas. It is located yards away from Interstate 5, providing easy on-and-off access.

Insider's tip: Schedule your visit to see Frontier Army Days re-enactments.



Vista Del Lago Visitor Center 58 MI/93 KM With a sweeping vista of Pyramid Lake from its wraparound balcony, this visitor center at Vista del Lago, or "view of the lake," is the largest of the California Department of Water Resources' information centers. Learn all about the fascinating world of water and the important role it plays in California.



Carrizo Plain National Monument

TO THE West

Carrizo Plain National Monument 68 MI/109 KM This is an area bypassed by time. Soda Lake, its centerpiece, is a glistening bed of white salt set within a vast open grassland rimmed by mountains. This remote spot is home to diverse communities of wildlife and plant species including several listed as threatened or endangered. It also is a culturally important area to Native Americans. In some spring times, the amount of wildflowers is so dramatic that people travel for hours to see them.

Insider's tip: Because of its remoteness, the monument has no water, food, or fuel. The weather can be extreme and some roads are not paved, making them impassable during rain.

Blackwell's Corner 56 MI/90 KM This was the last place that film icon James Dean stopped before he was killed in an automobile accident about 26 miles west of here in 1955. Today, two large cut-outs of Dean provide colorful photo backgrounds for those who stop.

Insider's tip: The store sells many different kinds of locally grown nuts and features an American 1950s motif.

James Dean Memorial and Memorial Junction 84 MI/135 KM American film actor James Dean was killed in an automobile accident at the intersection of what today is Highway 46 and Highway 41. Although the junction has been redesigned since that time, visitors still pay tribute to Dean. Signs naming this James Dean Memorial Junction are on both sides of this very busy intersection. About a mile to the west is the James Dean Memorial, a stainless steel sculpture around a tree next to the Jack Ranch Cafe. ●

BIG IN Bakersfield

Big things are happening in Bakersfield!
Here are some insider tips on how you can visit
and snap a photo at these big Bakersfield spots!



Bakersfield Arch is a replica of the original arch that spanned Union Avenue, which was U.S. 99 at the time. The arch was rebuilt here by Buck Owens and spans the four lanes of Sillect Avenue using the original arch's letters. SILLECT AVE. AT BUCK OWENS BLVD.

Big Red Boot at Emporium Western Store. 1031 19TH ST.



Beale Memorial Clock Tower is a 64-foot tall replica of the original structure that stood in the middle of Chester Avenue at 17th Street. Find the current version in front of the Kern County Museum. 3801 CHESTER AVE.

Insider's tip: The original was a victim of the 1952 earthquake. Some pieces from the original clock tower were included when this replica was built in 1964.



This **Native American** used to stand in front of Big "O" Tires at downtown's Garces Circle, then became a mascot for Standard Middle School before taking up residence in front of Ethel's Old Corral Café. 4310 ALFRED HARRELL HWY.

Insider's tip: A plaque at his feet describes his life in Bakersfield.



Dewar's Big Chew
2700 CALLOWAY DR.

Insider's tip: If you pronounce "Dewar's" like the liquor, everyone will know you are not a local.



Big Tomato at Frugatti's Wood Fired Italian Restaurant. 600 COFFEE RD.

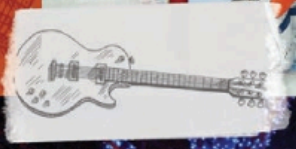


SpaceShipOne replica, a scale model of the original that flew out of Mojave Spaceport in 2004, hangs from the ceiling of the William M. Thomas Terminal at Meadows Field Airport (BFL). 3701 WINGS WAY

Insider's tip: Parking at the airport is free for the first 15 minutes.



Big Shoe is a 30-foot long, 20-foot high giant shoe built in 1947 with a shoe repair shop inside. 931 CHESTER AVE. ●



The Sound of
Something
Better.



BAKE